

STYRO PRODUCTS (D.B.A. INSUL-DECK) FIRE TEST REPORT

SCOPE OF WORK

CAN/ULC-S101, ASTM E119, AND UL 263 TESTING ON 13X19 FULL SCALE RESTRAINED LOAD BEARING FIRE TEST FLOOR/CEILING ASSEMBLY WITH 8 IN. INSUL-DECK® ICF

REPORT NUMBER

103353314SAT-001b_Rev.3

TEST DATE

08/16/18

ISSUE DATE

08/31/18

REVISED DATE

03/08/19

RECORD RETENTION END DATE

08/31/28

PAGES

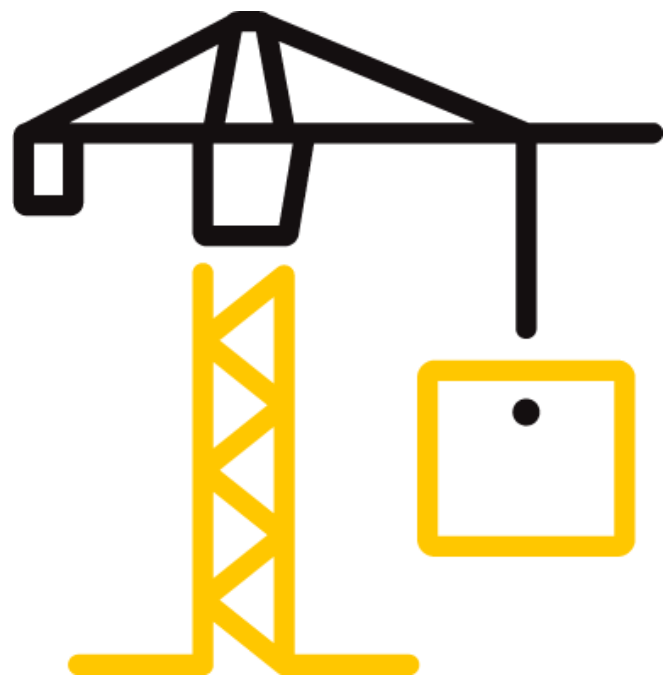
83

DOCUMENT CONTROL NUMBER

ATI 00662 (07/24/17)

RT-R-AMER-Test-2782

© 2017 INTERTEK



TEST REPORT FOR STYRO PRODUCTS (D.B.A. INSUL-DECK)

Report No.: 103353314SAT-001b_Rev.3

Date: 08/31/18

REPORT ISSUED TO

STYRO PRODUCTS (D.B.A INSUL-DECK)

65 Grady Knight Industrial Blvd.

Villa Rica, GA 30180

U.S.A.

SECTION 1

SCOPE


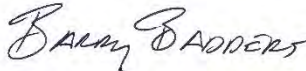
Intertek Building & Construction (B&C) was contracted by STYRO PRODUCTS (D.B.A INSUL-DECK), 65 Grady Knight Industrial Blvd., Villa Rica, GA 30180, to evaluate the fire-resistance characteristics of their 13×19 full scale restrained load bearing floor/ceiling assembly consisting of 8 in. thick Insul-Deck® ICF Building System. Testing was conducted at the Intertek B&C test facility in Elmendorf, Texas, U.S.A. This evaluation was conducted per the applicable requirements of CAN/ULC-S101-14, *Standard Methods of Fire Endurance Tests of Building Construction and Materials*, 5th Edition, dated June 2014; ASTM E119-18a, *Standard Test Methods for Fire Tests of Building Construction and Materials*, July 2018; and UL 263, *Fire Tests of Building Construction and Materials*, 14th Edition, dated June 21, 2011. Results obtained are tested values and were secured by using the designated test method. A summary of test results and the complete graphical test data is reported herein. This report does not constitute certification of this product nor an opinion or endorsement by this laboratory. This evaluation was also conducted under Intertek Test Report Number 103353314SAT-001a.

SECTION 2

SUMMARY OF TEST RESULTS

Based on the results obtained, the assembly tested as described in this report withstood the effects of the fire test for 161 minutes while being subjected to a superimposed design load of 128 psf, resulting in a total mid-span deflection of 3/4 in. In turn, the assembly described herein achieved a **restrained** fire resistance rating of **81 minutes** and an **un-restrained** fire resistance rating of **161 minutes**, per the loading conditions specified in Section 7 of this test report. Construction summary of the full assembly is located in Section 8 of this test report.

For INTERTEK B&C:

COMPLETED BY:	Abel de Hoyos	REVIEWED BY:	Barry L. Badders, M.S., P.E.
TITLE:	Senior Project Manager, Fire Resistance	TITLE:	Chief Engineer
SIGNATURE:		SIGNATURE:	
DATE:	03/08/19	DATE:	02/04/19

This report is for the exclusive use of Intertek's Client and is provided pursuant to the agreement between Intertek and its Client. Intertek's responsibility and liability are limited to the terms and conditions of the agreement. Intertek assumes no liability to any party, other than to the Client in accordance with the agreement, for any loss, expense or damage occasioned by the use of this report. Only the Client is authorized to permit copying or distribution of this report and then only in its entirety. Any use of the Intertek name or one of its marks for the sale or advertisement of the tested material, product or service must first be approved in writing by Intertek. The observations and test results in this report are relevant only to the sample(s) tested. This report by itself does not imply that the material, product, or service is or has ever been under an Intertek certification program.

TEST REPORT FOR STYRO PRODUCTS (D.B.A. INSUL-DECK)

Report No.: 103353314SAT-001b_Rev.3

Date: 08/31/18

SECTION 3

TEST METHOD

The assembly was evaluated in accordance with the following:

CAN/ULC-S101-14, *Standard Methods of Fire Endurance Tests of Building Construction and Materials*, 5th Edition, dated June 2014

ASTM E119-18a, *Standard Test Methods for Fire Tests of Building Construction and Materials*, July 2018.

UL 263, *Fire Tests of Building Construction and Materials*, 14th Edition, dated June 21, 2011.

SECTION 4

MATERIAL SOURCE/INSTALLATION

The components of the test assembly were independently selected by Intertek B&C representative Ronald Cole on 09/7/17 at the Styro-Products (d.b.a. Insul-Deck) manufacturing facility located at 65 Grady Knight Industrial Blvd., Villa Rica, GA 30180. The Insul-Deck® Building System (Intertek Sample ID No. SAT1805151049-001) ICF panels were received at the Evaluation Center in good condition on 12/01/17. The National Gypsum Gold-Bond® Brand Fire Shield 5/8 in. Type C board was shipped directly from National Gypsum (Intertek Sample ID No. SAT1807311357-001) and received at the Evaluation Center on 07/31/18. Additional assembly components were delivered by the client on 08/14/18. No Intertek Sample ID number was issued on these components.

SECTION 5

LIST OF OFFICIAL OBSERVERS

NAME	COMPANY
Douglas Bennion	Aqua-Pak Industries Ltd.
Victor M. Burgos	Intertek B&C
Abel de Hoyos	Intertek B&C
Homero Garza	Intertek B&C

This report is for the exclusive use of Intertek's Client and is provided pursuant to the agreement between Intertek and its Client. Intertek's responsibility and liability are limited to the terms and conditions of the agreement. Intertek assumes no liability to any party, other than to the Client in accordance with the agreement, for any loss, expense or damage occasioned by the use of this report. Only the Client is authorized to permit copying or distribution of this report and then only in its entirety. Any use of the Intertek name or one of its marks for the sale or advertisement of the tested material, product or service must first be approved in writing by Intertek. The observations and test results in this report are relevant only to the sample(s) tested. This report by itself does not imply that the material, product, or service is or has ever been under an Intertek certification program.

TEST REPORT FOR STYRO PRODUCTS (D.B.A. INSUL-DECK)

Report No.: 103353314SAT-001b_Rev.3

Date: 08/31/18

SECTION 6**TEST PROCEDURE**

The CAN/ULC-S101, ASTM E119, and UL 263 test standards measure the fire-resistance performance by quantifying the temperature rise on the unexposed face of the building element when the exposed side is subjected to the standardized Time vs. Temperature curve.

The furnace used for testing has an exposure space of 12 ft wide by 18 ft long by 7 ft high. The furnace is equipped with twelve burners capable of producing enough energy to meet the requirements of the standard time-temperature curve. The burners are positioned on the long dimension side walls of the furnace to allow for an even distribution of heat flux across the surface area of the test specimen, with no direct flame impingement. The temperature inside the furnace is controlled by adjusting the blower speed of the air provided to the burners. This temperature is determined by the average of the furnace probes, as indicated by the standard.

24 GA, Type K thermocouples covered by 6 in. by 6 in. dry felted pads were evenly distributed along the un-exposed surface of the specimen to measure heat transmission. Refer to Section 12 for thermocouple placement.

When the indicated resistance period is 1/2 hour or over, determined by the average or maximum temperature rise on the un-exposed or maximum temperature rise on the un-exposed surface or within the test specimen, or by failure under load, a correction shall be applied for variation of the furnace exposure from that prescribed, where it will affect the classification, by multiplying the indicated period by two-thirds of the difference in area between the curve of average furnace temperature and the standard curve for the first three-fourths of the period and dividing the product by the area between the standard curve and a base line of 68 °F for the same part of the indicated period, the latter area increased by 54 °F*h (3240 °F*min) to compensate for the thermal lag of the furnace thermocouples during the first part of the test. For fire exposure in the test higher than the standard, the indicated resistance period shall be increased by the amount of the correction and be similarly decreased for fire exposure below standard.

The correction can be expressed by the following equation:

$$C = \frac{2I(A - A_s)}{3(A_s + L)}$$

where:

C=correction in the same units as I,

I=indicated fire resistance period,

A=area under the curve of indicated average furnace temperature for the first three-fourths of the indicated period,

TEST REPORT FOR STYRO PRODUCTS (D.B.A. INSUL-DECK)

Report No.: 103353314SAT-001b_Rev.3

Date: 08/31/18

AS=area under the standard furnace curve for the same part of the indicated period, and
L=lag correction in the same units as A and AS (3240 °F*min)

For this report, the above section was converted to Imperial units for clarification. CAN/ULC-S101 is reported in Metric units.

SECTION 7

LOADING CALCULATIONS

Calculations for the floor/ceiling assembly were provided by the client and reviewed by Intertek personnel. These calculations are located in the project file for this evaluation. The loading was calculated following the methods of the 2015 IBC, referring to ACI 318-11 and the 2015 National Building Code of Canada, referring to CSA A23.3-14, LRFD. The applied test load was calculated to achieve the conditions of near maximum design moment resistance stress, as follows:

0.88 per ACI 318; and
0.96 per CSA A23.3-14

The following equations were used to calculate the hydraulic power unit line pressure for the floor/ceiling assembly:

$$F_t = (DL * N) - \text{Dead Load}$$

$$A = N_a * A_{eff.}$$

$$P = \frac{F_t}{A}$$

VARIABLE	DESCRIPTION	VALUE	UNIT
DL	Design Load	128	psf
Dead Load	Dead Load (wood planks)	224	lb.
N	Sample Area	247	ft ²
N _a	Number of Actuators	16	-----
A _{eff.}	Effective Area / Actuator	4.91	in ²
A	Total Area	78.6	in ²
F _t	Total Force	31,352	lb.
P	Pressure in Hydraulic Line	400	PSIG

TEST REPORT FOR STYRO PRODUCTS (D.B.A. INSUL-DECK)

Report No.: 103353314SAT-001b_Rev.3

Date: 08/31/18

SECTION 8**TEST SPECIMEN DESCRIPTION**

The 13 × 19-ft sample consisted of the Insul-Deck® ICF Building System, normal weight concrete, rebar and wire mesh reinforcement, and 5/8 in. Type C Gypsum Board. Detailed drawings of the construction are located in Section 15 and photographs are located in Section 12.

Building System

Insul-Deck® ICF Building System consisting of Insul-Deck® ICFs, 8 in. high × 24 in. wide × 16 ft long. A total of five (5) full panels and two (2) half panels (for the ends) were used to construct the full scale sample. Panel joints were adhered together using DOW GREAT STUFF™ Insulating Foam Sealant. Each Insul-Deck® panel consisted of two (2), 22 GA galvanized steel Z-furring strips. The strips were pre-punched and spaced at 12 in. on-center (oc). At each valley for the assembly (6 total) one stick of #6 (3/4 in. diameter) rebar was installed on top of a rebar chair with 1-1/2 in. cover depth. Refer to Photos 15 and 16 in Section 12 for further details.

Concrete Deck

3000 psi normal weight concrete was poured at the top of the Insul-Deck® ICFs, formed to have a thickness of 3 inches. 6 × 6 in.-W1.4, 10 GA wire mesh mat was installed at half depth of the concrete deck thickness. It was supported using plastic rebar chairs, spaced approximately 48 in. oc at several locations. The concrete deck was secured to each of the galvanized Z-furring strips using #15 × 5 in. long Carlisle Syntec Systems HP-X® Fasteners. Each Insul-Deck® ICF section contained ten (10) of these #15 screws, spaced at nominal 12 in. oc in the traverse direction, 42 in. from the ends and 48 in. at the center longitudinal sections. Refer to the drawings in Section 15 for further details.

Gypsum Board Ceiling

One (1) layer of 4 ft × 12 ft × 5/8 in. thick Type C National Gypsum Gold Bond® Brand Fire-Shield Wall Board was installed on the exposed side of the assembly. The 12 ft pieces were cut down to approximately 10 ft sections in order to fit inside the furnace exposed area dimensions. One (1) center joint was located at the traverse section of the assembly. The gypsum board was installed with the long dimension perpendicular to the galvanized Z-furring strips using #6 × 1-5/8 in. long Grip Rite Fine Thread Self-Drilling drywall screws, spaced at 12 in. oc and each way. All screw heads and butt-joints received a Level 2 finish.

The assembly was completed on 12/17/18. The sample was allowed to cure at ambient laboratory conditions for a minimum of 3 months. After that, the sample was accelerated cured at an ambient air temperature of approximately 140 °F for a minimum of 7 days. The relative humidity of the concrete was monitored from the top of the assembly at 3 locations. The final average relative humidity measurement was calculated to be 68%, taken on 08/06/18. The installation of the gypsum board was completed on 08/14/18.

TEST REPORT FOR STYRO PRODUCTS (D.B.A. INSUL-DECK)

Report No.: 103353314SAT-001b_Rev.3

Date: 08/31/18

SECTION 9

TEST RESULTS

The test was initiated on 08/16/18. The ambient temperature at the time of the test was 82 °F and the relative humidity was 78%. The superimposed design load of 128 psf (supplied by the client) was slowly applied to the assembly in 25% loading increments as specified in Section 11.4.1.1 of CAN/ULC-S101-14. The load was present on the sample for a minimum of 40 minutes prior to the start of the fire test. Observations made during the test are listed below:

FIRE-RESISTANCE TEST OBSERVATIONS	
Time (MIN:SEC)	Observations
Pre-test	The assembly was subjected to the prescribed load
0:00	Ignition of furnace burners at 9:17 a.m. Fire-resistance test begins
6:00	Gypsum board joint compound falling off
25:00	Gypsum board joints opening up. Intermittent flaming visible through joints
27:00	Gypsum board joint flaming increasing and now visible on all joints
30:00	EPS foam melting and visible through gypsum board fasteners
45:00	Heavy flaming continuing between gypsum board joints
60:00	No other visible changes. Load stable
70:00	Heavy flaming continuing between gypsum board joints; however, gypsum boards intact
90:00	Heavy flaming continuing between gypsum board joints; however, gypsum boards intact
100:00	All gypsum boards intact
110:00	Heavy flaming continuing between gypsum board joints; however, gypsum boards intact
120:00	Heavy flaming continuing between gypsum board joints; however, gypsum boards intact
130:30	Gypsum board beginning to sag down
140:00	Gypsum board continuing to sag down; however, remaining in place
150:00	No other visible changes
157:30	Large pop heard. Deflection more eminent. Concrete beginning to spall in furnace
158:00	Concrete continuing to crack and spall off from sample (exposed side only)
160:30	The maximum established temperature average of the loading member located in Section 4 was exceeded
161:00	Test continued per client request. Loud popping and cracking continuing as exposed side concrete t-beams were spalling
162:00	The burners were extinguished and the test was terminated

TEST REPORT FOR STYRO PRODUCTS (D.B.A. INSUL-DECK)

Report No.: 103353314SAT-001b_Rev.3

Date: 08/31/18

The assembly withstood the effects of the load and fire without passage of flame or gasses hot enough to ignite cotton waste on the un-exposed surface. The heat conducted through the assembly did not cause the temperatures measured by the thermocouples to exceed the 250 °F rise in average temperature or 325 °F rise in individual temperatures over the initial starting temperatures (refer to the temperature data presented in Section 11). However, at time = 160:30 (min:sec), the average maximum established absolute temperature of 1100 °F for the tensioning members was exceeded at Section 4, essentially ending the test.

LOAD DEFLECTION

The deflection of the un-exposed surface was measured at the mid-span of the assembly during the test. The amount of that deflection is presented in the table below.

Time (min)	Deflection (in.)
No Load	0
25% Load	0
50% Load	0
75% Load	0
100% Load	0
40 min after	1/4
<i>Fire Test Start</i>	1/4
5:00	1/4
10:00	1/4
15:00	1/4
20:00	1/4
25:00	1/4
30:00	1/4
35:00	1/4
40:00	1/4
45:00	1/4
50:00	1/4
55:00	1/4
60:00	1/4
65:00	1/4
70:00	1/4
75:00	1/4
80:00	1/2
85:00	1/2
90:00	1/2
95:00	1/2
100:00	1/2

TEST REPORT FOR STYRO PRODUCTS (D.B.A. INSUL-DECK)

Report No.: 103353314SAT-001b_Rev.3

Date: 08/31/18

105:00	1/2
110:00	1/2
115:00	1/2
120:00	1/2
125:00	1/2
130:00	3/4
135:00	3/4
140:00	3/4
145:00	3/4
150:00	3/4
155:00	3/4
160:00	3/4
162:00 (end of test)	3/4

In accordance with the CAN/ULC-S101, ASTM E119, and UL 263 test standards, a calculation for any correction to the indicated fire resistance period was done. The correction factor was then mathematically added to the indicated fire resistance period, yielding the fire resistance period achieved by this specimen as shown in the following table:

VARIABLE	DESCRIPTION	VALUE	UNITS
C	Correction Factor	23.2	seconds
I	Indicated FR Period	162	minutes
A	Area under Indicated FR Period for first 3/4 of test period	197041	°F*min
As	Area under Standard E119 Time vs. Temp. Curve for first 3/4 of test period	196348	°F*min
L	Lag Correction	3240	°F*min
FR Period	Fire-Resistance Period	161	minutes

SECTION 10

CALIBRATED INSTRUMENTATION USED FOR TESTING

EQUIPMENT	SERIAL NUMBER	CALIBRATION DUE DATE
Thermo/Hygrometer	170475469	06/26/19
Stopwatch	170558063	08/02/19
DAQ Unit	48JF0082	09/23/18
Pressure Gauge	09LE008	10/23/18
Pressure Gauge (reference only)	30ZV89-2	05/25/18
Moisture Meter	CP67785	10/10/18

TEST REPORT FOR STYRO PRODUCTS (D.B.A. INSUL-DECK)

Report No.: 103353314SAT-001b_Rev.3

Date: 08/31/18

SECTION 11

CONCLUSION

Intertek Building & Construction (B&C) was contracted by STYRO PRODUCTS, Inc. (DBA INSUL-DECK), 65 Grady Knight Industrial Blvd., Villa Rica, GA 30180, to evaluate the fire-resistance characteristics of their 13×19 full scale restrained load bearing floor/ceiling assembly consisting of 8 in. thick Insul-Deck® ICF Building System. This evaluation was conducted per the applicable requirements of **CAN/ULC-S101-14, Standard Methods of Fire Endurance Tests of Building Construction and Materials, 5th Edition, dated June 2014; ASTM E119-18a, Standard Test Methods for Fire Tests of Building Construction and Materials, July 2018; and UL 263, Fire Tests of Building Construction and Materials, 14th Edition, dated June 21, 2011.** Testing was conducted at the Intertek B&C test facility in Elmendorf, Texas, U.S.A. on 08/16/2018. This evaluation was also conducted under Intertek Test Report Number 103353314SAT-001a.

Based on the results obtained, the assembly tested as described in this report withstood the effects of the fire test for 161 minutes while being subjected to a superimposed design load of 128 psf, resulting in a total mid-span deflection of 3/4 in. In turn, the assembly described herein achieved a **restrained** fire resistance rating of **81 minutes** and an **un-restrained** fire resistance rating of **161 minutes**, per the loading conditions specified in Section 7 of this test report.

The un-restrained and restrained ratings achieved by the floor/ceiling assembly tested and described herein are compliant with the applicable requirements of ASTM E119-18a, UL 263 (14th Edition, 21-Jun-2011), and CAN/ULC-S101-14 (5th Edition, June 2014).

TEST REPORT FOR STYRO PRODUCTS (D.B.A. INSUL-DECK)

Report No.: 103353314SAT-001b_Rev.3

Date: 08/31/18

SECTION 12

PHOTOGRAPHS



Photo No. 1
Construction



Photo No. 2
Panel joint detail with foam adhesive

TEST REPORT FOR STYRO PRODUCTS (D.B.A. INSUL-DECK)

Report No.: 103353314SAT-001b_Rev.3

Date: 08/31/18



Photo No. 3
Foam adhesive



Photo No. 4
Panel thickness

TEST REPORT FOR STYRO PRODUCTS (D.B.A. INSUL-DECK)

Report No.: 103353314SAT-001b_Rev.3

Date: 08/31/18



Photo No. 5
Panel width

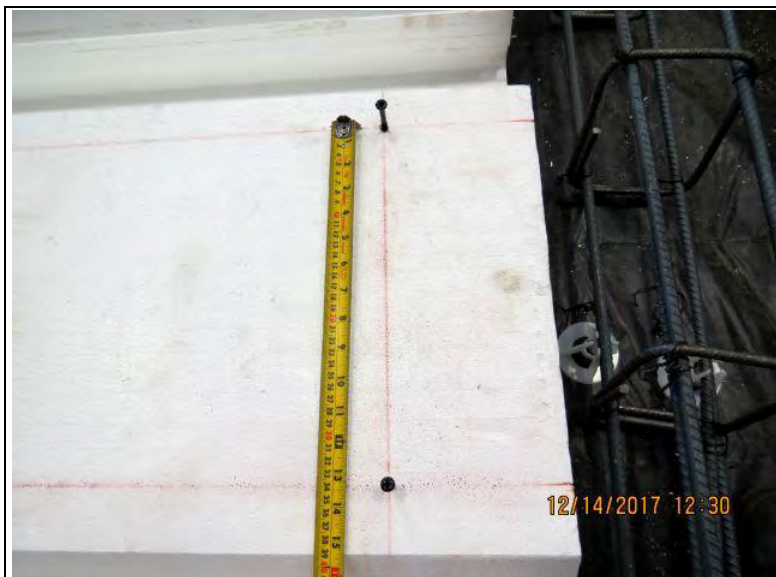


Photo No. 6
Z-furring fastener spacing

TEST REPORT FOR STYRO PRODUCTS (D.B.A. INSUL-DECK)

Report No.: 103353314SAT-001b_Rev.3

Date: 08/31/18



Photo No. 7
Z-furring fastener



Photo No. 8
Tensioning member rebar chair

TEST REPORT FOR STYRO PRODUCTS (D.B.A. INSUL-DECK)

Report No.: 103353314SAT-001b_Rev.3

Date: 08/31/18



Photo No. 9
Tensioning member rebar



Photo No. 10
Rebar tie-wire

TEST REPORT FOR STYRO PRODUCTS (D.B.A. INSUL-DECK)

Report No.: 103353314SAT-001b_Rev.3

Date: 08/31/18



Photo No. 11
Slab reinforcing mesh chair



Photo No. 12
Total sample depth

TEST REPORT FOR STYRO PRODUCTS (D.B.A. INSUL-DECK)

Report No.: 103353314SAT-001b_Rev.3

Date: 08/31/18



Photo No. 13
Installing tensioning member rebar



Photo No. 14
Installing tensioning member rebar

TEST REPORT FOR STYRO PRODUCTS (D.B.A. INSUL-DECK)

Report No.: 103353314SAT-001b_Rev.3

Date: 08/31/18



Photo No. 15

Installing tensioning member rebar



Photo No. 16

Installing tensioning member rebar

TEST REPORT FOR STYRO PRODUCTS (D.B.A. INSUL-DECK)

Report No.: 103353314SAT-001b_Rev.3

Date: 08/31/18



Photo No. 17
Tensioning member TC location layout

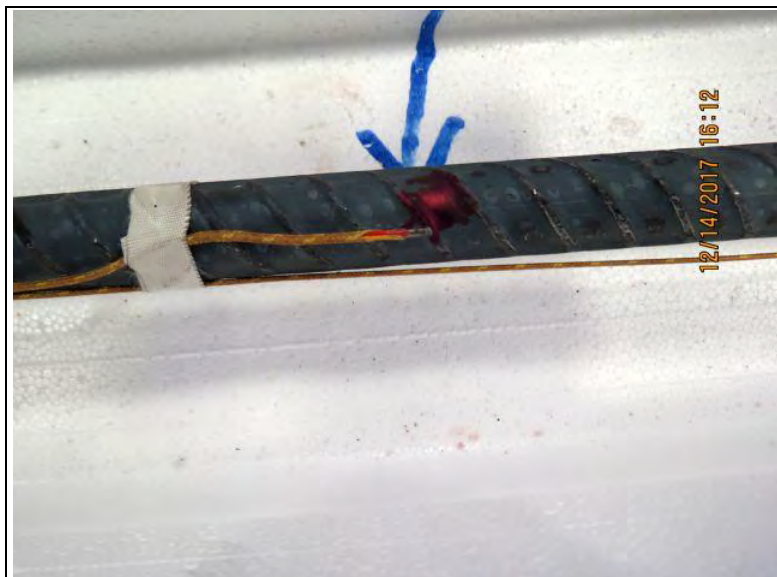


Photo No. 18
Tensioning member TC locations

TEST REPORT FOR STYRO PRODUCTS (D.B.A. INSUL-DECK)

Report No.: 103353314SAT-001b_Rev.3

Date: 08/31/18



Photo No. 19
Concrete pour



Photo No. 20
Concrete pour

TEST REPORT FOR STYRO PRODUCTS (D.B.A. INSUL-DECK)

Report No.: 103353314SAT-001b_Rev.3

Date: 08/31/18



Photo No. 21
Completed assembly



Photo No. 22
Setup into furnace restraining frame

TEST REPORT FOR STYRO PRODUCTS (D.B.A. INSUL-DECK)

Report No.: 103353314SAT-001b_Rev.3

Date: 08/31/18



Photo No. 23

Setup into furnace restraining frame



Photo No. 24

Setup into furnace restraining frame

TEST REPORT FOR STYRO PRODUCTS (D.B.A. INSUL-DECK)

Report No.: 103353314SAT-001b_Rev.3

Date: 08/31/18



Photo No. 25

Exposed side 5/8 in. Type C gypsum board



Photo No. 26

Installation of gypsum board

TEST REPORT FOR STYRO PRODUCTS (D.B.A. INSUL-DECK)

Report No.: 103353314SAT-001b_Rev.3

Date: 08/31/18



Photo No. 27
Gypsum board fasteners



Photo No. 28
Gypsum board fasteners

TEST REPORT FOR STYRO PRODUCTS (D.B.A. INSUL-DECK)

Report No.: 103353314SAT-001b_Rev.3

Date: 08/31/18



Photo No. 29
Installation of gypsum board



Photo No. 30
Exposed side – completed prior to fire test

TEST REPORT FOR STYRO PRODUCTS (D.B.A. INSUL-DECK)

Report No.: 103353314SAT-001b_Rev.3

Date: 08/31/18



Photo No. 31

Exposed side – completed prior to fire test



Photo No. 32

Fire Test

TEST REPORT FOR STYRO PRODUCTS (D.B.A. INSUL-DECK)

Report No.: 103353314SAT-001b_Rev.3

Date: 08/31/18



Photo No. 33
Fire Test

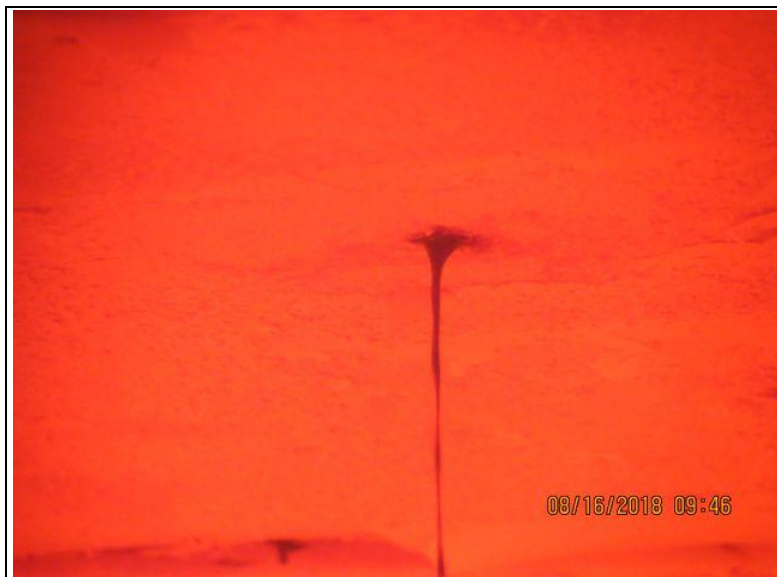


Photo No. 34
Fire Test

TEST REPORT FOR STYRO PRODUCTS (D.B.A. INSUL-DECK)

Report No.: 103353314SAT-001b_Rev.3

Date: 08/31/18

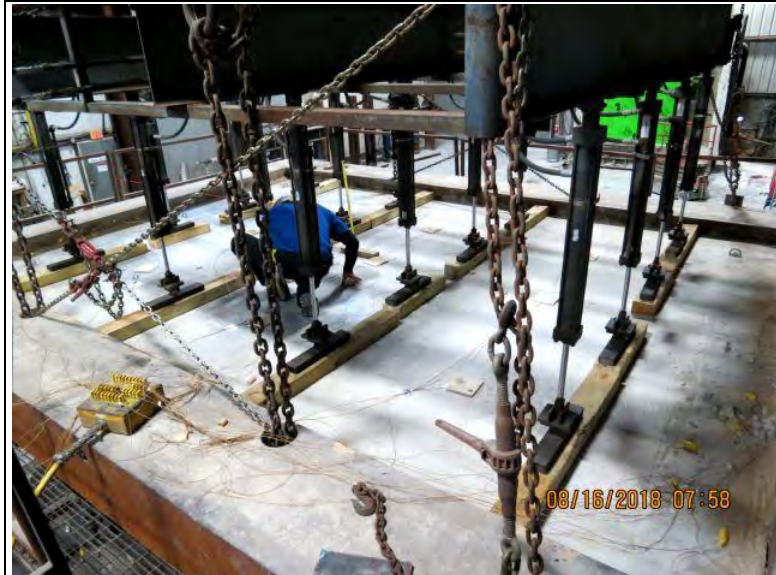


Photo No. 35
Fire Test



Photo No. 36
Fire Test

TEST REPORT FOR STYRO PRODUCTS (D.B.A. INSUL-DECK)

Report No.: 103353314SAT-001b_Rev.3

Date: 08/31/18

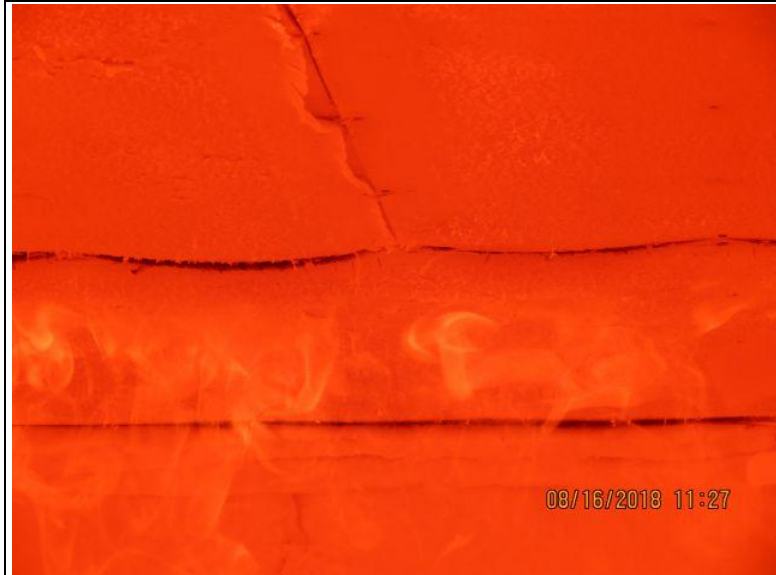


Photo No. 37
Fire Test



Photo No. 38
Fire Test

TEST REPORT FOR STYRO PRODUCTS (D.B.A. INSUL-DECK)

Report No.: 103353314SAT-001b_Rev.3

Date: 08/31/18



Photo No. 39
Post-test



Photo No. 40
Post-test

TEST REPORT FOR STYRO PRODUCTS (D.B.A. INSUL-DECK)

Report No.: 103353314SAT-001b_Rev.3

Date: 08/31/18



Photo No. 41
Post-test



Photo No. 42
Post-test

TEST REPORT FOR STYRO PRODUCTS (D.B.A. INSUL-DECK)

Report No.: 103353314SAT-001b_Rev.3

Date: 08/31/18



Photo No. 43
Post-test

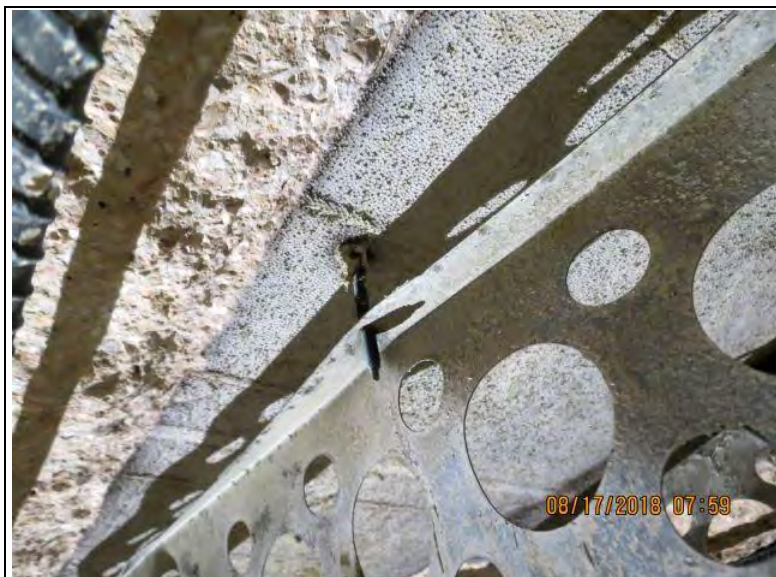


Photo No. 44
Post-test

TEST REPORT FOR STYRO PRODUCTS (D.B.A. INSUL-DECK)

Report No.: 103353314SAT-001b_Rev.3

Date: 08/31/18



Photo No. 45
Post-test



Photo No. 46
Post-test

TEST REPORT FOR STYRO PRODUCTS (D.B.A. INSUL-DECK)

Report No.: 103353314SAT-001b_Rev.3

Date: 08/31/18



Photo No. 47
Post-test



Photo No. 48
Post-test



Total Quality. Assured.

16015 Shady Falls Road
Elmendorf, Texas 78112

Telephone: 210-635-8100
Facsimile: 210-635-8101
www.intertek.com/building

TEST REPORT FOR STYRO PRODUCTS (D.B.A. INSUL-DECK)

Report No.: 103353314SAT-001b_Rev.3

Date: 08/31/18

SECTION 13

GRAPHS

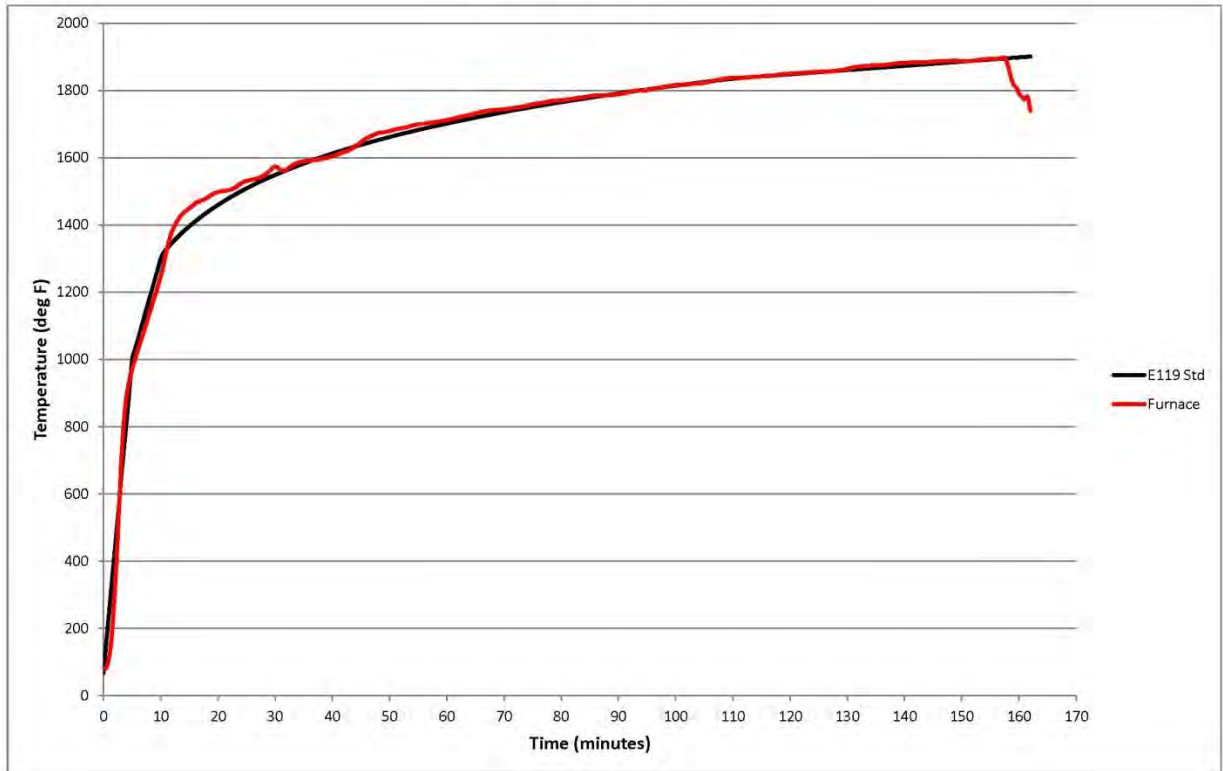
The following pages contain the test data displayed in graphical form.

TEST REPORT FOR STYRO PRODUCTS (D.B.A. INSUL-DECK)

Report No.: 103353314SAT-001b_Rev.3

Date: 08/31/18

Styro Products (d.b.a. Insul-Deck)
Project No. G103353314SAT-001b
16-Aug-2018
Furnace Interior Temperatures

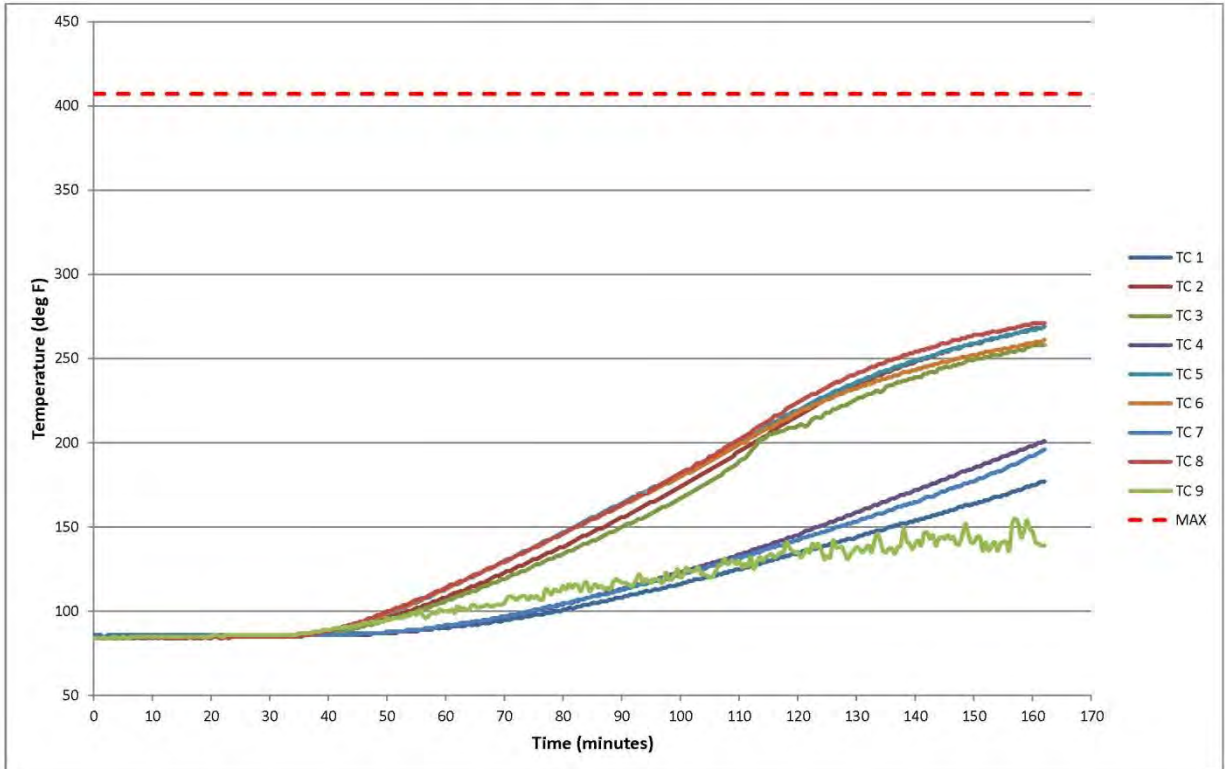


TEST REPORT FOR STYRO PRODUCTS (D.B.A. INSUL-DECK)

Report No.: 103353314SAT-001b_Rev.3

Date: 08/31/18

Styro Products (d.b.a. Insul-Deck)
Project No. G103353314SAT-001b
16-Aug-2018
Un-Exposed Side Temperatures

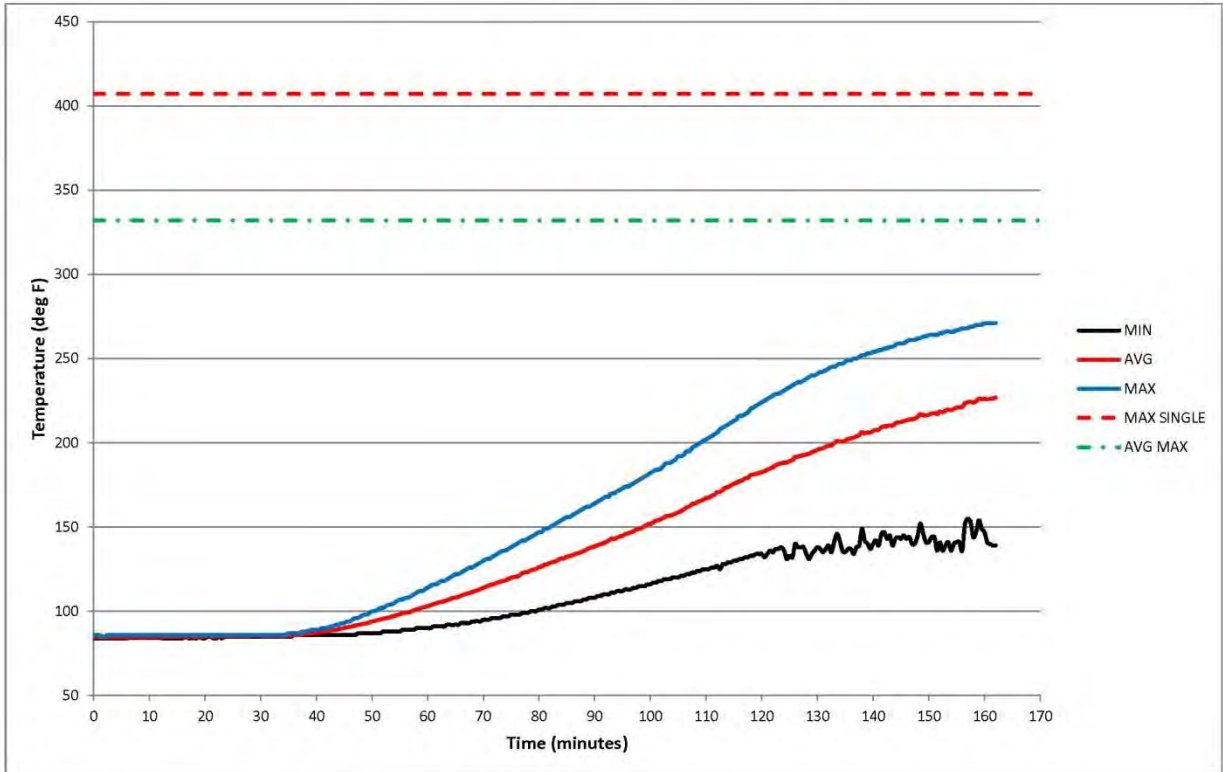


TEST REPORT FOR STYRO PRODUCTS (D.B.A. INSUL-DECK)

Report No.: 103353314SAT-001b_Rev.3

Date: 08/31/18

Styro Products (d.b.a. Insul-Deck)
Project No. G103353314SAT-001b
16-Aug-2018
MIN, AVG, MAX Un-exposed Side Temperatures

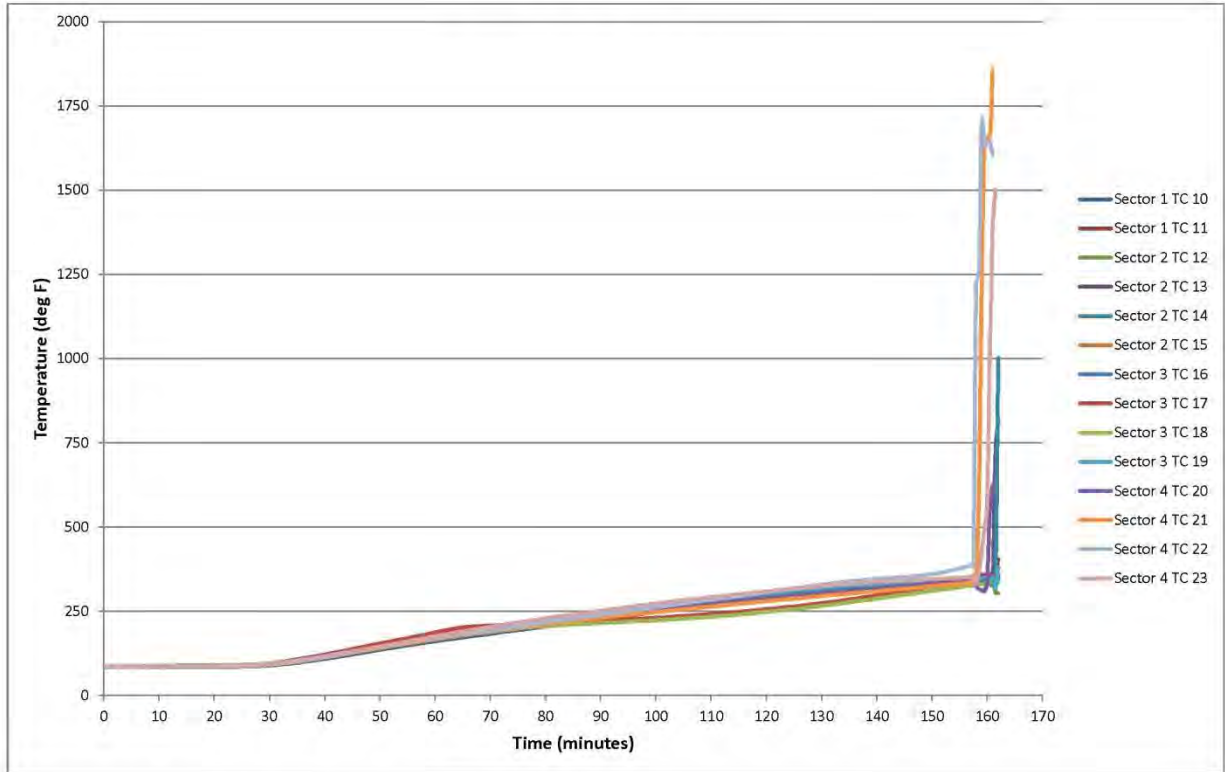


TEST REPORT FOR STYRO PRODUCTS (D.B.A. INSUL-DECK)

Report No.: 103353314SAT-001b_Rev.3

Date: 08/31/18

Styro Products (d.b.a. Insul-Deck)
Project No. G103353314SAT-001b
16-Aug-2018
Internal Rebar - All Temperatures

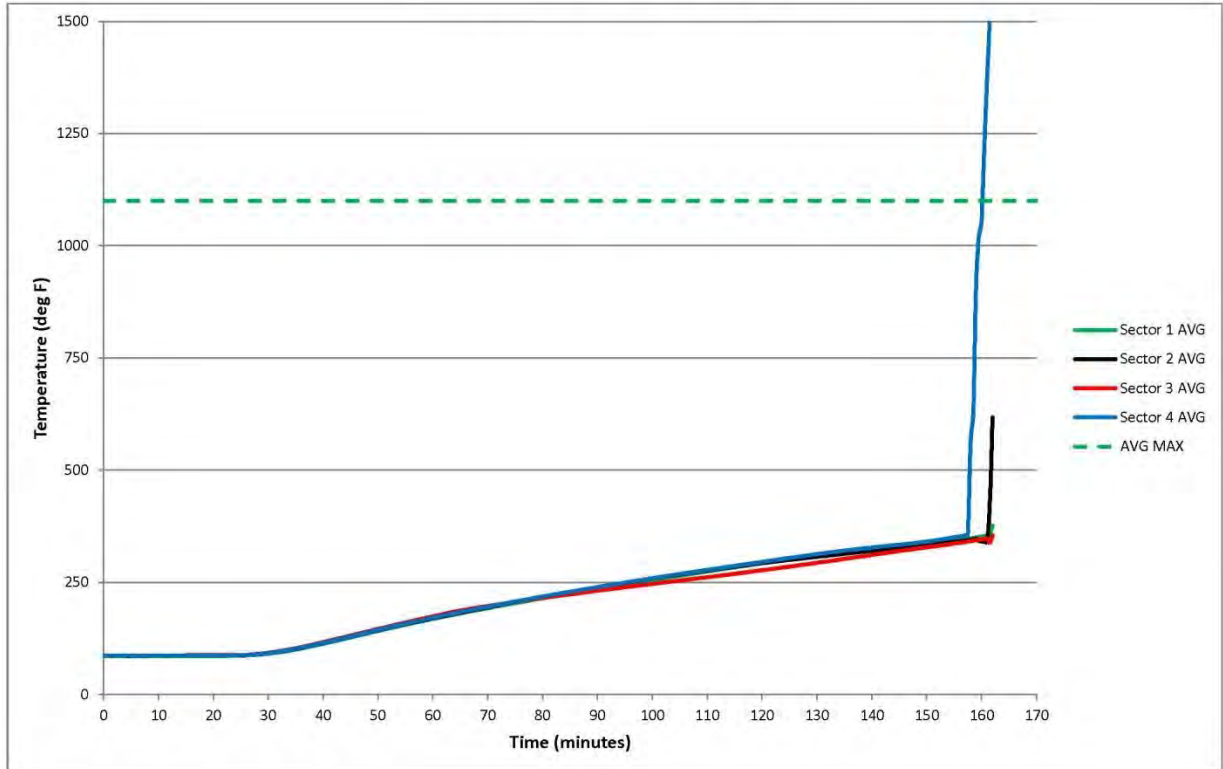


TEST REPORT FOR STYRO PRODUCTS (D.B.A. INSUL-DECK)

Report No.: 103353314SAT-001b_Rev.3

Date: 08/31/18

Styro Products (d.b.a. Insul-Deck)
Project No. G103353314SAT-001b
16-Aug-2018
Internal Rebar - Sector AVG Temperatures





Total Quality. Assured.

16015 Shady Falls Road
Elmendorf, Texas 78112

Telephone: 210-635-8100
Facsimile: 210-635-8101
www.intertek.com/building

TEST REPORT FOR STYRO PRODUCTS (D.B.A. INSUL-DECK)

Report No.: 103353314SAT-001b_Rev.3

Date: 08/31/18

SECTION 14

NUMERICAL DATA

The following pages contain the test data displayed in tabular form.

TEST REPORT FOR STYRO PRODUCTS (D.B.A. INSUL-DECK)

Report No.: 103353314SAT-001b_Rev.3

Date: 08/31/18

Styro Products (d.b.a. Insul-Deck)

Project No. G103353314SAT-001b
13x19 Floor/Ceiling Assembly

16-Aug-2018

Time (min)	Integration		Integration		Error (%)	Furnace	
	E119 Std Average (°F)	Furnace Average (°F)	of Furnace Average (°F*min)	of E119 Std Average (°F*min)		Probe No. 1 (°F)	Probe No. 2 (°F)
0	68	81	0	0	0.00%	82	81
0.5	161	84	41	57	-28.10%	84	84
1	254	116	91	161	-43.49%	105	111
1.5	348	192	168	312	-46.08%	162	174
2	441	319	296	509	-41.88%	256	286
2.5	534	483	496	753	-34.06%	386	436
3	627	665	783	1043	-24.89%	540	603
3.5	720	806	1151	1380	-16.58%	684	746
4	814	888	1574	1763	-10.71%	785	835
4.5	907	937	2030	2193	-7.42%	853	887
5	1000	971	2507	2670	-6.09%	902	923
5.5	1030	1000	3000	3178	-5.58%	945	954
6	1060	1028	3507	3700	-5.21%	983	982
6.5	1090	1055	4028	4238	-4.94%	1018	1009
7	1120	1081	4562	4790	-4.76%	1050	1034
7.5	1150	1107	5109	5358	-4.64%	1079	1061
8	1180	1135	5670	5940	-4.55%	1110	1089
8.5	1210	1163	6244	6538	-4.48%	1141	1116
9	1240	1191	6833	7150	-4.44%	1171	1142
9.5	1270	1218	7435	7778	-4.40%	1199	1169
10	1300	1248	8051	8420	-4.38%	1230	1200
10.5	1317	1283	8684	9074	-4.30%	1263	1234
11	1328	1322	9336	9736	-4.11%	1299	1272
11.5	1337	1356	10005	10402	-3.82%	1331	1309
12	1347	1382	10690	11073	-3.46%	1359	1337
12.5	1356	1400	11385	11748	-3.09%	1380	1354
13	1364	1414	12089	12429	-2.73%	1395	1370
13.5	1373	1427	12799	13113	-2.39%	1409	1384
14	1381	1436	13515	13801	-2.08%	1418	1397
14.5	1388	1443	14234	14493	-1.79%	1426	1406
15	1396	1449	14957	15190	-1.53%	1432	1414
15.5	1403	1456	15684	15889	-1.29%	1439	1421
16	1410	1463	16414	16593	-1.08%	1445	1429
16.5	1417	1468	17146	17299	-0.88%	1449	1436
17	1424	1471	17881	18010	-0.71%	1452	1441
17.5	1430	1475	18618	18723	-0.56%	1456	1446
18	1436	1479	19357	19439	-0.43%	1461	1450
18.5	1442	1485	20098	20159	-0.30%	1467	1456
19	1448	1490	20841	20882	-0.19%	1474	1461
19.5	1454	1495	21588	21607	-0.09%	1480	1467
20	1459	1497	22336	22335	0.00%	1484	1471
20.5	1465	1500	23085	23066	0.08%	1488	1474
21	1470	1501	23835	23800	0.15%	1490	1478
21.5	1475	1502	24586	24536	0.20%	1491	1479
22	1480	1504	25337	25275	0.25%	1495	1482
22.5	1485	1507	26090	26017	0.28%	1499	1485
23	1490	1511	26844	26760	0.31%	1504	1490
23.5	1495	1517	27601	27507	0.34%	1510	1497
24	1499	1523	28361	28255	0.38%	1516	1503
24.5	1504	1528	29124	29006	0.41%	1521	1508
25	1508	1530	29889	29759	0.43%	1523	1510
25.5	1513	1533	30654	30515	0.46%	1525	1513
26	1517	1535	31421	31272	0.48%	1526	1516
26.5	1521	1537	32189	32032	0.49%	1527	1518



Total Quality. Assured.

16015 Shady Falls Road
Elmendorf, Texas 78112

Telephone: 210-635-8100
Facsimile: 210-635-8101
www.intertek.com/building

TEST REPORT FOR STYRO PRODUCTS (D.B.A. INSUL-DECK)

Report No.: 103353314SAT-001b_Rev.3

Date: 08/31/18

Styro Products (d.b.a. Insul-Deck)

Project No. G103353314SAT-001b
13x19 Floor/Ceiling Assembly

16-Aug-2018

Time (min)	E119 Std Average (°F)	Furnace Average (°F)	Integration of Furnace Average (°F*min)	Integration of E119 Std Average (°F*min)	Error (%)	Furnace Probe No. 1 (°F)	Furnace Probe No. 2 (°F)
27	1525	1539	32958	32793	0.50%	1529	1519
27.5	1529	1542	33728	33557	0.51%	1531	1523
28	1533	1547	34500	34323	0.52%	1534	1527
28.5	1537	1552	35275	35091	0.53%	1539	1532
29	1541	1560	36053	35860	0.54%	1547	1539
29.5	1545	1569	36835	36632	0.56%	1556	1548
30	1549	1574	37621	37405	0.58%	1562	1552
30.5	1552	1570	38407	38180	0.59%	1561	1543
31	1556	1562	39190	38958	0.60%	1556	1534
31.5	1559	1561	39971	39736	0.59%	1555	1530
32	1563	1565	40752	40517	0.58%	1558	1531
32.5	1566	1571	41536	41299	0.57%	1565	1536
33	1570	1577	42323	42083	0.57%	1572	1542
33.5	1573	1582	43113	42869	0.57%	1577	1547
34	1576	1585	43904	43656	0.57%	1580	1551
34.5	1579	1587	44698	44445	0.57%	1583	1553
35	1583	1589	45492	45236	0.57%	1585	1555
35.5	1586	1591	46287	46028	0.56%	1587	1558
36	1589	1591	47082	46821	0.56%	1587	1559
36.5	1592	1592	47878	47617	0.55%	1588	1560
37	1595	1592	48674	48413	0.54%	1588	1561
37.5	1598	1594	49470	49211	0.53%	1589	1563
38	1601	1596	50268	50011	0.51%	1592	1565
38.5	1604	1597	51066	50812	0.50%	1593	1567
39	1606	1599	51865	51615	0.49%	1595	1570
39.5	1609	1602	52665	52419	0.47%	1597	1573
40	1612	1604	53467	53224	0.46%	1600	1576
40.5	1615	1607	54270	54031	0.44%	1603	1579
41	1617	1610	55074	54839	0.43%	1606	1582
41.5	1620	1613	55880	55648	0.42%	1609	1585
42	1623	1616	56687	56459	0.40%	1612	1589
42.5	1625	1619	57496	57271	0.39%	1616	1592
43	1628	1624	58307	58084	0.38%	1620	1597
43.5	1631	1628	59120	58899	0.37%	1624	1602
44	1633	1633	59935	59715	0.37%	1630	1608
44.5	1636	1640	60753	60532	0.37%	1637	1616
45	1638	1647	61575	61350	0.37%	1643	1623
45.5	1640	1652	62400	62170	0.37%	1649	1629
46	1643	1657	63227	62991	0.38%	1654	1635
46.5	1645	1662	64057	63813	0.38%	1659	1640
47	1648	1666	64889	64636	0.39%	1663	1644
47.5	1650	1669	65723	65460	0.40%	1667	1649
48	1652	1673	66558	66286	0.41%	1670	1652
48.5	1655	1675	67395	67113	0.42%	1672	1654
49	1657	1676	68233	67940	0.43%	1673	1655
49.5	1659	1677	69071	68769	0.44%	1674	1656
50	1661	1679	69910	69599	0.45%	1676	1658
50.5	1663	1682	70750	70431	0.45%	1679	1661
51	1666	1684	71592	71263	0.46%	1681	1664
51.5	1668	1685	72434	72096	0.47%	1682	1666
52	1670	1687	73277	72930	0.48%	1684	1668
52.5	1672	1688	74121	73766	0.48%	1685	1670
53	1674	1691	74966	74602	0.49%	1688	1672
53.5	1676	1693	75812	75440	0.49%	1691	1675



Total Quality. Assured.

16015 Shady Falls Road
Elmendorf, Texas 78112

Telephone: 210-635-8100
Facsimile: 210-635-8101
www.intertek.com/building

TEST REPORT FOR STYRO PRODUCTS (D.B.A. INSUL-DECK)

Report No.: 103353314SAT-001b_Rev.3

Date: 08/31/18

Styro Products (d.b.a. Insul-Deck)

Project No. G103353314SAT-001b
13x19 Floor/Ceiling Assembly

16-Aug-2018

Time (min)	E119 Std Average (°F)	Furnace Average (°F)	Integration of Furnace Average (°F*min)	Integration of E119 Std Average (°F*min)	Error (%)	Furnace Probe No. 1 (°F)	Furnace Probe No. 2 (°F)
54	1678	1695	76659	76279	0.50%	1693	1677
54.5	1680	1697	77507	77118	0.50%	1695	1678
55	1682	1699	78355	77959	0.51%	1697	1679
55.5	1684	1701	79205	78800	0.51%	1699	1681
56	1686	1702	80056	79643	0.52%	1700	1682
56.5	1688	1703	80907	80487	0.52%	1701	1684
57	1690	1703	81758	81331	0.53%	1702	1684
57.5	1692	1704	82610	82177	0.53%	1703	1684
58	1694	1705	83462	83023	0.53%	1704	1686
58.5	1696	1707	84315	83871	0.53%	1706	1688
59	1698	1708	85169	84719	0.53%	1708	1689
59.5	1700	1710	86023	85568	0.53%	1710	1691
60	1701	1712	86879	86418	0.53%	1711	1693
60.5	1703	1713	87735	87270	0.53%	1712	1695
61	1705	1715	88592	88122	0.53%	1715	1698
61.5	1707	1718	89450	88975	0.53%	1718	1701
62	1709	1720	90310	89828	0.54%	1720	1704
62.5	1710	1722	91170	90683	0.54%	1722	1706
63	1712	1723	92031	91539	0.54%	1723	1707
63.5	1714	1725	92893	92395	0.54%	1725	1709
64	1716	1727	93756	93253	0.54%	1728	1712
64.5	1717	1729	94620	94111	0.54%	1731	1714
65	1719	1732	95485	94970	0.54%	1734	1716
65.5	1721	1734	96351	95830	0.54%	1736	1719
66	1722	1736	97219	96691	0.55%	1739	1721
66.5	1724	1738	98087	97552	0.55%	1741	1724
67	1726	1739	98957	98415	0.55%	1743	1725
67.5	1727	1740	99826	99278	0.55%	1744	1726
68	1729	1741	100697	100142	0.55%	1745	1727
68.5	1731	1742	101567	101007	0.55%	1745	1728
69	1732	1742	102438	101873	0.55%	1746	1729
69.5	1734	1743	103309	102739	0.55%	1746	1730
70	1735	1744	104181	103607	0.55%	1747	1731
70.5	1737	1745	105053	104475	0.55%	1749	1731
71	1738	1746	105926	105343	0.55%	1750	1733
71.5	1740	1747	106799	106213	0.55%	1750	1736
72	1742	1749	107673	107083	0.55%	1753	1738
72.5	1743	1750	108548	107955	0.55%	1753	1740
73	1745	1751	109423	108827	0.55%	1754	1741
73.5	1746	1753	110299	109699	0.55%	1755	1743
74	1748	1755	111176	110573	0.55%	1758	1747
74.5	1749	1757	112054	111447	0.54%	1760	1749
75	1751	1758	112932	112322	0.54%	1762	1750
75.5	1752	1760	113812	113197	0.54%	1764	1752
76	1753	1761	114692	114074	0.54%	1765	1753
76.5	1755	1762	115573	114951	0.54%	1765	1754
77	1756	1764	116454	115829	0.54%	1766	1757
77.5	1758	1765	117337	116707	0.54%	1768	1760
78	1759	1767	118220	117586	0.54%	1772	1761
78.5	1761	1769	119104	118466	0.54%	1773	1764
79	1762	1771	119989	119347	0.54%	1775	1765
79.5	1763	1771	120874	120228	0.54%	1775	1765
80	1765	1771	121759	121110	0.54%	1775	1765
80.5	1766	1772	122645	121993	0.53%	1776	1767



Total Quality. Assured.

16015 Shady Falls Road
Elmendorf, Texas 78112

Telephone: 210-635-8100
Facsimile: 210-635-8101
www.intertek.com/building

TEST REPORT FOR STYRO PRODUCTS (D.B.A. INSUL-DECK)

Report No.: 103353314SAT-001b_Rev.3

Date: 08/31/18

Styro Products (d.b.a. Insul-Deck)

Project No. G103353314SAT-001b
13x19 Floor/Ceiling Assembly

16-Aug-2018

Time (min)	E119 Std Average (°F)	Furnace Average (°F)	Integration of Furnace Average (°F*min)	Integration of E119 Std Average (°F*min)	Error (%)	Furnace Probe No. 1 (°F)	Furnace Probe No. 2 (°F)
81	1768	1773	123531	122877	0.53%	1777	1769
81.5	1769	1773	124417	123761	0.53%	1777	1769
82	1770	1775	125304	124645	0.53%	1778	1771
82.5	1772	1776	126192	125531	0.53%	1780	1772
83	1773	1778	127081	126417	0.52%	1783	1773
83.5	1774	1779	127970	127304	0.52%	1783	1774
84	1776	1779	128859	128191	0.52%	1783	1776
84.5	1777	1781	129749	129079	0.52%	1785	1777
85	1778	1783	130640	129968	0.52%	1788	1779
85.5	1779	1784	131532	130857	0.52%	1789	1780
86	1781	1785	132424	131747	0.51%	1790	1782
86.5	1782	1785	133317	132638	0.51%	1789	1783
87	1783	1786	134210	133529	0.51%	1790	1783
87.5	1785	1786	135103	134421	0.51%	1790	1784
88	1786	1785	135995	135314	0.50%	1790	1785
88.5	1787	1786	136888	136207	0.50%	1790	1785
89	1788	1786	137781	137101	0.50%	1791	1785
89.5	1789	1787	138674	137995	0.49%	1793	1786
90	1791	1789	139569	138890	0.49%	1796	1787
90.5	1792	1790	140463	139786	0.48%	1796	1787
91	1793	1791	141359	140682	0.48%	1798	1789
91.5	1794	1794	142255	141579	0.48%	1800	1791
92	1796	1797	143152	142477	0.47%	1803	1794
92.5	1797	1798	144051	143375	0.47%	1805	1795
93	1798	1800	144950	144274	0.47%	1807	1797
93.5	1799	1799	145850	145173	0.47%	1807	1796
94	1800	1800	146750	146073	0.46%	1807	1796
94.5	1801	1800	147650	146973	0.46%	1807	1796
95	1803	1801	148550	147874	0.46%	1808	1797
95.5	1804	1803	149451	148776	0.45%	1810	1799
96	1805	1804	150352	149678	0.45%	1812	1800
96.5	1806	1806	151255	150581	0.45%	1813	1802
97	1807	1808	152158	151484	0.45%	1815	1803
97.5	1808	1809	153062	152388	0.44%	1817	1804
98	1809	1811	153967	153292	0.44%	1818	1807
98.5	1811	1812	154873	154197	0.44%	1820	1807
99	1812	1813	155779	155103	0.44%	1820	1809
99.5	1813	1815	156686	156009	0.43%	1821	1811
100	1814	1816	157594	156916	0.43%	1822	1812
100.5	1815	1816	158502	157823	0.43%	1823	1812
101	1816	1816	159410	158731	0.43%	1822	1810
101.5	1817	1817	160319	159639	0.43%	1823	1811
102	1818	1818	161227	160548	0.42%	1824	1812
102.5	1819	1818	162136	161457	0.42%	1825	1812
103	1820	1819	163045	162367	0.42%	1826	1813
103.5	1822	1820	163955	163278	0.41%	1827	1814
104	1823	1820	164865	164189	0.41%	1827	1814
104.5	1824	1821	165776	165101	0.41%	1828	1814
105	1825	1822	166687	166013	0.41%	1829	1815
105.5	1826	1824	167598	166925	0.40%	1831	1816
106	1827	1826	168510	167838	0.40%	1832	1818
106.5	1828	1828	169424	168752	0.40%	1834	1821
107	1829	1830	170338	169666	0.40%	1836	1822
107.5	1830	1831	171253	170581	0.39%	1837	1824



Total Quality. Assured.

16015 Shady Falls Road
Elmendorf, Texas 78112

Telephone: 210-635-8100
Facsimile: 210-635-8101
www.intertek.com/building

TEST REPORT FOR STYRO PRODUCTS (D.B.A. INSUL-DECK)

Report No.: 103353314SAT-001b_Rev.3

Date: 08/31/18

Styro Products (d.b.a. Insul-Deck)

Project No. G103353314SAT-001b
13x19 Floor/Ceiling Assembly

16-Aug-2018

Time (min)	E119 Std Average (°F)	Furnace Average (°F)	Integration of Furnace Average (°F*min)	Integration of E119 Std Average (°F*min)	Error (%)	Furnace Probe No. 1 (°F)	Furnace Probe No. 2 (°F)
108	1831	1833	172170	171496	0.39%	1839	1825
108.5	1832	1835	173087	172412	0.39%	1841	1826
109	1833	1836	174004	173328	0.39%	1842	1827
109.5	1834	1837	174923	174245	0.39%	1843	1828
110	1835	1837	175841	175162	0.39%	1843	1828
110.5	1836	1837	176760	176080	0.39%	1843	1828
111	1836	1837	177678	176998	0.38%	1843	1827
111.5	1837	1837	178596	177916	0.38%	1844	1828
112	1838	1838	179515	178834	0.38%	1844	1828
112.5	1838	1838	180434	179753	0.38%	1844	1829
113	1839	1839	181353	180673	0.38%	1845	1830
113.5	1839	1840	182273	181592	0.38%	1846	1830
114	1840	1840	183193	182512	0.37%	1846	1830
114.5	1841	1841	184114	183432	0.37%	1846	1830
115	1841	1842	185034	184353	0.37%	1848	1831
115.5	1842	1843	185956	185274	0.37%	1849	1833
116	1843	1844	186877	186195	0.37%	1849	1834
116.5	1843	1844	187799	187116	0.37%	1849	1833
117	1844	1844	188721	188038	0.36%	1850	1834
117.5	1844	1845	189644	188960	0.36%	1850	1834
118	1845	1847	190567	189882	0.36%	1852	1836
118.5	1846	1848	191491	190805	0.36%	1853	1837
119	1846	1850	192415	191728	0.36%	1855	1838
119.5	1847	1850	193340	192651	0.36%	1855	1838
120	1848	1850	194265	193575	0.36%	1855	1838
120.5	1848	1850	195190	194499	0.35%	1856	1838
121	1849	1851	196115	195423	0.35%	1856	1840
121.5	1850	1851	197041	196348	0.35%	1856	1840
122	1850	1852	197966	197273	0.35%	1857	1840
122.5	1851	1853	198893	198198	0.35%	1857	1841
123	1851	1853	199819	199124	0.35%	1858	1841
123.5	1852	1854	200746	200050	0.35%	1859	1841
124	1853	1855	201673	200976	0.35%	1860	1842
124.5	1853	1855	202600	201902	0.35%	1860	1843
125	1854	1855	203528	202829	0.34%	1860	1843
125.5	1855	1856	204455	203756	0.34%	1861	1844
126	1855	1856	205384	204683	0.34%	1861	1844
126.5	1856	1856	206312	205611	0.34%	1861	1844
127	1856	1856	207240	206539	0.34%	1861	1845
127.5	1857	1857	208168	207468	0.34%	1861	1845
128	1858	1858	209097	208396	0.34%	1862	1845
128.5	1858	1859	210026	209325	0.33%	1864	1846
129	1859	1861	210956	210255	0.33%	1866	1847
129.5	1860	1862	211886	211184	0.33%	1867	1848
130	1860	1864	212818	212114	0.33%	1869	1850
130.5	1861	1866	213750	213044	0.33%	1871	1853
131	1861	1868	214683	213975	0.33%	1873	1855
131.5	1862	1869	215618	214906	0.33%	1874	1856
132	1863	1870	216553	215837	0.33%	1875	1858
132.5	1863	1871	217488	216769	0.33%	1876	1859
133	1864	1872	218424	217700	0.33%	1877	1860
133.5	1865	1873	219360	218632	0.33%	1878	1861
134	1865	1874	220297	219565	0.33%	1878	1862
134.5	1866	1875	221234	220498	0.33%	1879	1862

TEST REPORT FOR STYRO PRODUCTS (D.B.A. INSUL-DECK)

Report No.: 103353314SAT-001b_Rev.3

Date: 08/31/18

Styro Products (d.b.a. Insul-Deck)

Project No. G103353314SAT-001b
13x19 Floor/Ceiling Assembly

16-Aug-2018

Time (min)	E119 Std Average (°F)	Furnace Average (°F)	Integration of Furnace Average (°F*min)	Integration of E119 Std Average (°F*min)	Error (%)	Furnace Probe No. 1 (°F)	Furnace Probe No. 2 (°F)
135	1866	1875	222171	221431	0.33%	1879	1863
135.5	1867	1875	223109	222364	0.33%	1880	1863
136	1868	1875	224046	223298	0.34%	1881	1863
136.5	1868	1876	224984	224232	0.34%	1881	1863
137	1869	1876	225922	225166	0.34%	1881	1864
137.5	1870	1877	226860	226101	0.34%	1882	1865
138	1870	1879	227799	227036	0.34%	1883	1867
138.5	1871	1880	228739	227971	0.34%	1885	1867
139	1871	1881	229679	228907	0.34%	1886	1868
139.5	1872	1881	230620	229843	0.34%	1886	1868
140	1873	1882	231560	230779	0.34%	1887	1868
140.5	1873	1882	232502	231715	0.34%	1887	1870
141	1874	1882	233443	232652	0.34%	1887	1870
141.5	1875	1883	234384	233589	0.34%	1888	1870
142	1875	1883	235325	234527	0.34%	1888	1870
142.5	1876	1883	236267	235465	0.34%	1888	1871
143	1877	1883	237209	236403	0.34%	1888	1870
143.5	1877	1884	238150	237341	0.34%	1888	1871
144	1878	1884	239092	238280	0.34%	1889	1872
144.5	1878	1884	240034	239219	0.34%	1889	1872
145	1879	1886	240977	240158	0.34%	1890	1872
145.5	1880	1886	241920	241098	0.34%	1891	1873
146	1880	1887	242863	242038	0.34%	1892	1874
146.5	1881	1887	243806	242978	0.34%	1892	1874
147	1882	1887	244750	243919	0.34%	1892	1874
147.5	1882	1888	245694	244860	0.34%	1893	1875
148	1883	1888	246638	245801	0.34%	1893	1875
148.5	1883	1888	247582	246743	0.34%	1893	1875
149	1884	1888	248525	247684	0.34%	1893	1875
149.5	1885	1888	249469	248627	0.34%	1893	1874
150	1885	1888	250413	249569	0.34%	1893	1874
150.5	1886	1887	251357	250512	0.34%	1892	1874
151	1887	1887	252301	251455	0.34%	1893	1874
151.5	1887	1888	253244	252399	0.34%	1893	1875
152	1888	1888	254188	253342	0.33%	1893	1875
152.5	1888	1889	255133	254286	0.33%	1894	1876
153	1889	1890	256077	255231	0.33%	1895	1877
153.5	1890	1891	257023	256176	0.33%	1896	1878
154	1890	1893	257969	257121	0.33%	1898	1879
154.5	1891	1894	258915	258066	0.33%	1899	1881



Total Quality. Assured.

16015 Shady Falls Road
Elmendorf, Texas 78112

Telephone: 210-635-8100
Facsimile: 210-635-8101
www.intertek.com/building

TEST REPORT FOR STYRO PRODUCTS (D.B.A. INSUL-DECK)

Report No.: 103353314SAT-001b_Rev.3

Date: 08/31/18

Styro Products (d.b.a. Insul-Deck)

Project No. G103353314SAT-001b
13x19 Floor/Ceiling Assembly

16-Aug-2018

Time (min)	E119 Std Average (°F)	Furnace Average (°F)	Integration of Furnace Average (°F*min)	Integration of E119 Std Average (°F*min)	Error (%)	Furnace Probe No. 1 (°F)	Furnace Probe No. 2 (°F)
155	1892	1894	259862	259011	0.33%	1899	1881
155.5	1892	1894	260809	259957	0.33%	1899	1881
156	1893	1894	261756	260904	0.33%	1899	1881
156.5	1893	1895	262704	261850	0.33%	1900	1882
157	1894	1896	263651	262797	0.32%	1900	1882
157.5	1895	1897	264599	263744	0.32%	1905	1891
158	1895	1879	265543	264692	0.32%	1858	1899
158.5	1896	1845	266474	265640	0.31%	1766	1890
159	1897	1819	267390	266588	0.30%	1691	1888
159.5	1897	1809	268297	267536	0.28%	1654	1892
160	1898	1791	269197	268485	0.27%	1622	1889
160.5	1899	1781	270090	269434	0.24%	1598	1888
161	1899	1774	270979	270384	0.22%	1591	1877
161.5	1900	1780	271867	271333	0.20%	1593	1885
162	1900	1740	272747	272284	0.17%	1571	1827

Max Temp
Max Allowed
AVG Max



Total Quality. Assured.

16015 Shady Falls Road
Elmendorf, Texas 78112

Telephone: 210-635-8100
Facsimile: 210-635-8101
www.intertek.com/building

TEST REPORT FOR STYRO PRODUCTS (D.B.A. INSUL-DECK)

Report No.: 103353314SAT-001b_Rev.3

Date: 08/31/18

Styro Products (d.b.a. Insul-Deck)

Project No. G103353314SAT-001b
13x19 Floor/Ceiling Assembly

16-Aug-2018

Time (min)	Furnace	Furnace	Furnace	Furnace	Furnace	Furnace	Furnace	Furnace
	Probe No. 3 (°F)	Probe No. 4 (°F)	Probe No. 5 (°F)	Probe No. 6 (°F)	Probe No. 7 (°F)	Probe No. 8 (°F)	Probe No. 9 (°F)	Probe No. 10 (°F)
0	81	81	81	81	81	81	81	81
0.5	83	84	82	86	83	84	81	86
1	106	130	105	133	108	117	107	137
1.5	160	245	166	240	168	191	170	244
2	253	433	273	412	258	312	294	408
2.5	383	667	423	626	376	480	445	612
3	550	896	601	831	516	674	617	821
3.5	714	1012	757	941	655	831	762	957
4	824	1046	855	972	759	917	862	1020
4.5	892	1059	917	985	830	965	932	1052
5	934	1065	957	994	879	999	981	1073
5.5	967	1076	987	1008	921	1029	1020	1095
6	997	1092	1015	1027	957	1056	1055	1118
6.5	1025	1110	1041	1048	989	1083	1087	1141
7	1053	1129	1066	1068	1020	1109	1116	1163
7.5	1081	1152	1091	1091	1051	1137	1145	1186
8	1108	1177	1117	1117	1082	1165	1174	1213
8.5	1136	1205	1144	1144	1111	1193	1202	1238
9	1165	1231	1172	1170	1142	1223	1231	1264
9.5	1193	1256	1197	1194	1170	1252	1258	1288
10	1224	1289	1226	1224	1201	1285	1286	1317
10.5	1260	1330	1260	1264	1233	1323	1317	1350
11	1300	1373	1299	1305	1269	1362	1350	1386
11.5	1338	1409	1337	1341	1303	1397	1380	1415
12	1367	1433	1367	1365	1331	1421	1407	1436
12.5	1388	1446	1389	1380	1352	1437	1429	1448
13	1405	1454	1407	1392	1369	1450	1445	1456
13.5	1419	1463	1422	1403	1384	1459	1460	1464
14	1431	1468	1434	1411	1396	1465	1470	1469
14.5	1438	1469	1442	1414	1408	1473	1478	1473
15	1444	1472	1448	1419	1420	1480	1487	1478
15.5	1448	1476	1455	1426	1430	1487	1495	1483
16	1455	1484	1463	1435	1440	1493	1502	1488
16.5	1460	1485	1469	1438	1448	1498	1507	1490
17	1462	1486	1473	1442	1455	1500	1511	1492
17.5	1466	1488	1476	1444	1461	1505	1515	1494
18	1470	1491	1480	1449	1467	1509	1518	1499
18.5	1475	1494	1484	1454	1474	1515	1524	1506
19	1478	1497	1488	1459	1481	1521	1528	1512
19.5	1483	1500	1493	1463	1487	1525	1532	1517
20	1487	1502	1496	1465	1490	1524	1535	1519
20.5	1488	1502	1498	1468	1493	1527	1536	1522
21	1490	1502	1500	1468	1497	1529	1537	1523
21.5	1490	1500	1500	1468	1499	1529	1538	1524
22	1491	1500	1501	1470	1502	1531	1539	1527
22.5	1493	1502	1503	1474	1505	1534	1542	1531
23	1497	1507	1507	1479	1509	1538	1545	1537
23.5	1503	1512	1512	1487	1513	1543	1550	1543
24	1508	1518	1518	1493	1519	1549	1555	1549
24.5	1513	1522	1524	1500	1525	1554	1560	1554
25	1514	1522	1527	1502	1530	1557	1563	1555
25.5	1516	1523	1529	1505	1534	1561	1565	1556
26	1519	1524	1532	1508	1537	1563	1566	1556
26.5	1520	1526	1535	1511	1540	1565	1568	1557

TEST REPORT FOR STYRO PRODUCTS (D.B.A. INSUL-DECK)

Report No.: 103353314SAT-001b_Rev.3

Date: 08/31/18

Styro Products (d.b.a. Insul-Deck)

Project No. G103353314SAT-001b
13x19 Floor/Ceiling Assembly

16-Aug-2018

Time (min)	Furnace Probe No. 3 (°F)	Furnace Probe No. 4 (°F)	Furnace Probe No. 5 (°F)	Furnace Probe No. 6 (°F)	Furnace Probe No. 7 (°F)	Furnace Probe No. 8 (°F)	Furnace Probe No. 9 (°F)	Furnace Probe No. 10 (°F)
27	1522	1527	1537	1514	1543	1567	1570	1559
27.5	1525	1532	1541	1518	1547	1571	1573	1562
28	1528	1535	1545	1522	1552	1577	1578	1567
28.5	1533	1540	1550	1528	1558	1584	1584	1574
29	1540	1549	1556	1536	1565	1592	1591	1584
29.5	1548	1557	1564	1545	1573	1602	1600	1594
30	1553	1560	1571	1548	1580	1610	1608	1600
30.5	1545	1550	1570	1541	1580	1605	1608	1593
31	1536	1541	1564	1533	1575	1596	1603	1586
31.5	1531	1539	1561	1534	1574	1597	1604	1586
32	1532	1544	1563	1539	1577	1600	1609	1593
32.5	1537	1551	1568	1546	1581	1606	1616	1602
33	1543	1558	1575	1553	1586	1611	1622	1608
33.5	1547	1564	1580	1560	1590	1614	1625	1612
34	1551	1567	1585	1564	1593	1617	1627	1614
34.5	1554	1570	1588	1567	1596	1618	1629	1616
35	1556	1572	1591	1569	1597	1619	1630	1617
35.5	1558	1573	1593	1571	1598	1619	1631	1618
36	1560	1573	1594	1572	1599	1618	1631	1618
36.5	1561	1574	1596	1573	1599	1618	1631	1618
37	1562	1575	1597	1575	1599	1618	1631	1617
37.5	1563	1577	1599	1578	1599	1618	1631	1619
38	1566	1580	1602	1581	1601	1620	1633	1621
38.5	1568	1582	1604	1583	1601	1619	1633	1622
39	1570	1584	1606	1586	1602	1621	1634	1623
39.5	1573	1588	1609	1590	1604	1623	1636	1626
40	1575	1591	1612	1593	1606	1624	1638	1629
40.5	1578	1593	1614	1596	1608	1625	1639	1631
41	1582	1597	1618	1600	1611	1628	1642	1635
41.5	1585	1601	1622	1605	1613	1630	1644	1638
42	1588	1604	1625	1608	1615	1632	1647	1641
42.5	1591	1607	1628	1613	1618	1635	1650	1644
43	1595	1612	1632	1617	1622	1639	1654	1649
43.5	1600	1617	1637	1622	1625	1642	1658	1654
44	1605	1623	1642	1629	1629	1646	1662	1660
44.5	1612	1630	1648	1636	1635	1653	1669	1667
45	1618	1637	1654	1643	1640	1659	1675	1673
45.5	1624	1643	1660	1650	1645	1664	1681	1678
46	1629	1648	1666	1655	1650	1668	1686	1683
46.5	1634	1653	1671	1659	1655	1672	1690	1688
47	1638	1656	1675	1663	1658	1675	1694	1691
47.5	1642	1659	1679	1667	1661	1678	1697	1695
48	1646	1662	1683	1672	1665	1681	1701	1698
48.5	1648	1663	1686	1674	1668	1683	1702	1699
49	1649	1662	1688	1675	1669	1684	1702	1699
49.5	1651	1664	1689	1677	1670	1684	1703	1700
50	1653	1665	1692	1681	1673	1686	1704	1702
50.5	1655	1667	1695	1684	1675	1689	1706	1705
51	1658	1669	1697	1686	1678	1692	1708	1708
51.5	1659	1669	1699	1688	1680	1693	1709	1708
52	1660	1671	1701	1690	1682	1694	1710	1710
52.5	1662	1672	1702	1691	1683	1696	1711	1711
53	1665	1674	1704	1695	1685	1697	1713	1714
53.5	1667	1676	1707	1698	1687	1699	1715	1717

TEST REPORT FOR STYRO PRODUCTS (D.B.A. INSUL-DECK)

Report No.: 103353314SAT-001b_Rev.3

Date: 08/31/18

Styro Products (d.b.a. Insul-Deck)

Project No. G103353314SAT-001b
13x19 Floor/Ceiling Assembly

16-Aug-2018

Time (min)	Furnace	Furnace	Furnace	Furnace	Furnace	Furnace	Furnace	Furnace
	Probe No. 3 (°F)	Probe No. 4 (°F)	Probe No. 5 (°F)	Probe No. 6 (°F)	Probe No. 7 (°F)	Probe No. 8 (°F)	Probe No. 9 (°F)	Probe No. 10 (°F)
54	1669	1677	1709	1701	1689	1700	1717	1720
54.5	1671	1678	1711	1703	1690	1702	1718	1720
55	1672	1680	1713	1706	1692	1704	1720	1724
55.5	1674	1682	1715	1709	1694	1706	1721	1726
56	1675	1682	1716	1711	1695	1706	1722	1726
56.5	1675	1682	1717	1713	1696	1707	1722	1728
57	1676	1683	1718	1714	1697	1708	1722	1729
57.5	1676	1683	1719	1716	1698	1708	1723	1729
58	1678	1684	1720	1716	1698	1709	1724	1730
58.5	1679	1685	1722	1718	1700	1711	1725	1732
59	1680	1687	1723	1720	1702	1713	1726	1734
59.5	1682	1688	1725	1722	1703	1714	1728	1738
60	1684	1689	1727	1724	1705	1716	1729	1738
60.5	1685	1691	1728	1725	1706	1717	1731	1737
61	1688	1693	1730	1728	1708	1718	1732	1740
61.5	1691	1696	1733	1730	1710	1721	1734	1743
62	1693	1698	1735	1734	1712	1723	1737	1747
62.5	1694	1699	1737	1736	1714	1725	1738	1748
63	1695	1699	1738	1737	1715	1725	1739	1749
63.5	1697	1701	1740	1739	1716	1727	1741	1752
64	1699	1703	1742	1741	1719	1729	1743	1753
64.5	1701	1705	1744	1744	1721	1731	1744	1757
65	1703	1708	1746	1745	1723	1733	1747	1760
65.5	1706	1710	1748	1747	1725	1735	1749	1761
66	1708	1712	1751	1750	1727	1737	1752	1763
66.5	1710	1713	1752	1753	1729	1739	1753	1765
67	1711	1715	1754	1754	1730	1740	1754	1766
67.5	1713	1715	1755	1755	1731	1741	1755	1767
68	1713	1716	1756	1755	1732	1741	1755	1766
68.5	1714	1717	1756	1756	1733	1742	1756	1769
69	1715	1717	1757	1756	1733	1742	1756	1769
69.5	1716	1718	1758	1758	1733	1743	1757	1771
70	1717	1718	1759	1758	1734	1744	1757	1772
70.5	1718	1719	1759	1759	1735	1745	1759	1774
71	1720	1720	1760	1762	1736	1746	1760	1774
71.5	1721	1722	1761	1764	1737	1746	1760	1773
72	1722	1723	1763	1766	1738	1747	1762	1776
72.5	1724	1725	1764	1766	1739	1748	1763	1775
73	1725	1727	1765	1767	1740	1749	1765	1775
73.5	1727	1728	1767	1768	1741	1752	1767	1779
74	1730	1730	1769	1769	1743	1754	1768	1781
74.5	1732	1732	1771	1770	1745	1755	1770	1785
75	1734	1734	1772	1772	1747	1757	1771	1785
75.5	1735	1735	1774	1775	1749	1758	1773	1786
76	1737	1736	1775	1777	1749	1759	1774	1787
76.5	1738	1737	1776	1777	1750	1759	1775	1787
77	1740	1739	1777	1778	1752	1761	1777	1789
77.5	1742	1741	1777	1779	1754	1763	1778	1790
78	1743	1742	1779	1779	1755	1765	1780	1794
78.5	1745	1744	1781	1781	1757	1766	1782	1796
79	1747	1746	1783	1783	1758	1767	1783	1798
79.5	1747	1746	1784	1784	1758	1767	1783	1796
80	1748	1747	1784	1782	1758	1767	1784	1797
80.5	1749	1748	1784	1784	1759	1769	1784	1797

TEST REPORT FOR STYRO PRODUCTS (D.B.A. INSUL-DECK)

Report No.: 103353314SAT-001b_Rev.3

Date: 08/31/18

Styro Products (d.b.a. Insul-Deck)

Project No. G103353314SAT-001b
13x19 Floor/Ceiling Assembly

16-Aug-2018

Time (min)	Furnace	Furnace	Furnace	Furnace	Furnace	Furnace	Furnace	Furnace
	Probe No. 3 (°F)	Probe No. 4 (°F)	Probe No. 5 (°F)	Probe No. 6 (°F)	Probe No. 7 (°F)	Probe No. 8 (°F)	Probe No. 9 (°F)	Probe No. 10 (°F)
81	1750	1749	1785	1784	1760	1770	1786	1799
81.5	1751	1749	1784	1784	1761	1770	1786	1799
82	1752	1751	1786	1786	1762	1771	1788	1800
82.5	1755	1754	1787	1786	1763	1774	1790	1803
83	1757	1755	1789	1789	1765	1775	1791	1805
83.5	1758	1756	1790	1789	1766	1775	1792	1805
84	1758	1757	1790	1789	1766	1775	1793	1805
84.5	1759	1758	1791	1792	1767	1777	1794	1808
85	1761	1760	1793	1794	1769	1778	1796	1811
85.5	1763	1762	1794	1794	1770	1779	1798	1812
86	1764	1763	1795	1794	1771	1781	1799	1813
86.5	1766	1764	1795	1793	1772	1781	1799	1811
87	1766	1764	1796	1793	1772	1781	1800	1812
87.5	1766	1763	1796	1792	1772	1781	1800	1812
88	1767	1764	1796	1791	1771	1780	1800	1810
88.5	1767	1764	1795	1791	1772	1781	1800	1811
89	1768	1765	1795	1790	1773	1782	1801	1812
89.5	1769	1766	1796	1792	1774	1782	1802	1814
90	1770	1768	1797	1794	1775	1783	1803	1818
90.5	1771	1769	1798	1795	1776	1785	1804	1817
91	1773	1771	1799	1795	1777	1787	1806	1819
91.5	1775	1774	1801	1797	1780	1790	1808	1821
92	1777	1777	1804	1799	1782	1792	1811	1826
92.5	1779	1778	1805	1800	1784	1794	1813	1827
93	1781	1780	1807	1801	1785	1794	1815	1829
93.5	1782	1780	1807	1799	1785	1795	1815	1828
94	1782	1780	1807	1800	1786	1795	1816	1829
94.5	1782	1780	1807	1799	1786	1795	1816	1828
95	1783	1782	1808	1800	1787	1796	1817	1830
95.5	1785	1784	1809	1801	1788	1798	1819	1833
96	1787	1786	1811	1802	1790	1799	1821	1833
96.5	1789	1788	1812	1803	1791	1801	1823	1834
97	1791	1790	1814	1805	1793	1802	1825	1837
97.5	1793	1792	1816	1806	1794	1804	1827	1838
98	1795	1795	1818	1807	1796	1806	1828	1839
98.5	1797	1796	1819	1808	1798	1807	1830	1841
99	1798	1797	1820	1809	1799	1809	1831	1841
99.5	1800	1799	1822	1809	1800	1811	1833	1842
100	1802	1801	1823	1811	1802	1812	1835	1843
100.5	1802	1801	1823	1810	1802	1812	1835	1843
101	1802	1801	1823	1810	1802	1812	1835	1843
101.5	1802	1801	1824	1810	1803	1812	1835	1845
102	1803	1802	1824	1810	1803	1814	1837	1846
102.5	1804	1803	1825	1811	1804	1814	1838	1846
103	1806	1804	1826	1812	1805	1815	1839	1848
103.5	1806	1805	1827	1813	1806	1816	1839	1847
104	1807	1806	1827	1813	1807	1816	1840	1847
104.5	1808	1807	1828	1813	1807	1816	1841	1847
105	1809	1809	1829	1814	1808	1818	1842	1849
105.5	1811	1811	1830	1816	1809	1820	1844	1852
106	1813	1813	1832	1818	1810	1821	1846	1853
106.5	1815	1816	1834	1820	1813	1823	1848	1855
107	1817	1818	1836	1821	1814	1825	1850	1856
107.5	1819	1821	1838	1823	1816	1826	1852	1858

TEST REPORT FOR STYRO PRODUCTS (D.B.A. INSUL-DECK)

Report No.: 103353314SAT-001b_Rev.3

Date: 08/31/18

Styro Products (d.b.a. Insul-Deck)

Project No. G103353314SAT-001b
13x19 Floor/Ceiling Assembly

16-Aug-2018

Time (min)	Furnace	Furnace	Furnace	Furnace	Furnace	Furnace	Furnace	Furnace
	Probe No. 3 (°F)	Probe No. 4 (°F)	Probe No. 5 (°F)	Probe No. 6 (°F)	Probe No. 7 (°F)	Probe No. 8 (°F)	Probe No. 9 (°F)	Probe No. 10 (°F)
108	1822	1823	1840	1825	1817	1829	1854	1860
108.5	1823	1825	1842	1826	1819	1830	1856	1861
109	1824	1825	1843	1827	1820	1832	1857	1863
109.5	1825	1826	1843	1827	1821	1832	1858	1864
110	1826	1827	1844	1827	1821	1833	1858	1863
110.5	1826	1827	1844	1827	1821	1833	1858	1862
111	1826	1826	1844	1827	1821	1832	1858	1862
111.5	1826	1828	1845	1828	1822	1833	1858	1861
112	1827	1829	1845	1828	1822	1833	1858	1863
112.5	1828	1829	1845	1828	1822	1834	1859	1864
113	1829	1830	1846	1830	1824	1835	1860	1865
113.5	1830	1831	1847	1830	1824	1836	1861	1866
114	1830	1832	1847	1830	1825	1836	1862	1865
114.5	1831	1832	1848	1831	1825	1837	1863	1865
115	1832	1833	1849	1831	1826	1838	1864	1868
115.5	1833	1835	1850	1832	1827	1839	1865	1868
116	1834	1836	1851	1834	1828	1840	1866	1868
116.5	1834	1836	1851	1833	1828	1840	1866	1868
117	1835	1836	1851	1833	1828	1840	1867	1868
117.5	1836	1836	1852	1834	1829	1841	1868	1871
118	1838	1839	1854	1836	1830	1843	1870	1873
118.5	1839	1840	1855	1837	1831	1844	1871	1872
119	1840	1842	1856	1839	1833	1846	1873	1875
119.5	1841	1843	1857	1839	1833	1845	1873	1873
120	1840	1843	1857	1838	1834	1846	1872	1873
120.5	1841	1844	1857	1839	1834	1847	1873	1873
121	1843	1845	1858	1840	1835	1847	1875	1873
121.5	1843	1845	1858	1840	1835	1847	1875	1874
122	1844	1845	1859	1841	1836	1848	1875	1876
122.5	1844	1846	1859	1841	1836	1849	1876	1876
123	1844	1847	1860	1841	1837	1849	1876	1876
123.5	1845	1848	1860	1842	1837	1850	1877	1876
124	1846	1849	1861	1843	1838	1851	1878	1878
124.5	1847	1849	1862	1843	1839	1852	1878	1879
125	1847	1849	1862	1844	1839	1852	1878	1879
125.5	1848	1850	1862	1844	1840	1853	1879	1880
126	1849	1850	1862	1844	1840	1853	1879	1879
126.5	1849	1850	1863	1844	1840	1853	1879	1879
127	1849	1851	1863	1844	1840	1853	1879	1878
127.5	1849	1852	1863	1845	1841	1854	1879	1877
128	1850	1853	1864	1846	1842	1855	1881	1879
128.5	1851	1854	1866	1848	1843	1856	1883	1883
129	1853	1855	1867	1849	1844	1857	1884	1884
129.5	1854	1856	1868	1850	1844	1858	1886	1885
130	1855	1859	1870	1852	1845	1860	1888	1887
130.5	1858	1862	1872	1854	1848	1862	1890	1889
131	1860	1863	1874	1856	1850	1865	1892	1891
131.5	1862	1864	1876	1857	1852	1866	1893	1892
132	1863	1865	1876	1857	1853	1867	1894	1893
132.5	1864	1865	1877	1858	1854	1869	1895	1896
133	1865	1865	1878	1858	1855	1870	1896	1899
133.5	1866	1866	1879	1859	1856	1871	1897	1900
134	1867	1868	1879	1861	1857	1871	1897	1898
134.5	1868	1868	1880	1861	1858	1872	1898	1899

TEST REPORT FOR STYRO PRODUCTS (D.B.A. INSUL-DECK)

Report No.: 103353314SAT-001b_Rev.3

Date: 08/31/18

Styro Products (d.b.a. Insul-Deck)

Project No. G103353314SAT-001b
13x19 Floor/Ceiling Assembly

16-Aug-2018

Time (min)	Furnace	Furnace	Furnace	Furnace	Furnace	Furnace	Furnace	Furnace
	Probe No. 3 (°F)	Probe No. 4 (°F)	Probe No. 5 (°F)	Probe No. 6 (°F)	Probe No. 7 (°F)	Probe No. 8 (°F)	Probe No. 9 (°F)	Probe No. 10 (°F)
135	1868	1868	1880	1861	1858	1873	1899	1900
135.5	1869	1868	1880	1861	1858	1872	1899	1899
136	1869	1869	1881	1862	1858	1872	1900	1899
136.5	1869	1870	1881	1863	1858	1872	1900	1899
137	1869	1870	1882	1863	1859	1873	1901	1900
137.5	1871	1872	1883	1864	1860	1874	1901	1900
138	1873	1874	1884	1865	1861	1875	1903	1902
138.5	1873	1874	1885	1867	1862	1877	1904	1903
139	1874	1874	1886	1867	1864	1878	1905	1907
139.5	1874	1875	1887	1867	1865	1879	1906	1906
140	1875	1875	1887	1867	1865	1880	1906	1908
140.5	1876	1874	1887	1867	1866	1881	1906	1909
141	1876	1874	1887	1867	1866	1882	1906	1909
141.5	1877	1875	1888	1868	1867	1881	1907	1908
142	1877	1876	1889	1869	1868	1882	1906	1905
142.5	1878	1877	1889	1870	1868	1881	1907	1905
143	1877	1878	1889	1870	1867	1880	1907	1904
143.5	1878	1879	1890	1870	1868	1881	1907	1905
144	1878	1879	1890	1870	1868	1882	1907	1906
144.5	1879	1879	1890	1871	1868	1882	1908	1906
145	1879	1879	1891	1871	1870	1884	1909	1910
145.5	1880	1879	1891	1872	1870	1884	1909	1911
146	1881	1879	1892	1872	1871	1885	1910	1912
146.5	1881	1881	1892	1873	1872	1886	1911	1910
147	1881	1880	1892	1873	1872	1886	1911	1909
147.5	1882	1880	1893	1873	1872	1886	1912	1912
148	1882	1881	1893	1874	1872	1887	1912	1910
148.5	1882	1881	1893	1874	1872	1886	1912	1909
149	1882	1882	1894	1874	1872	1886	1913	1909
149.5	1882	1881	1893	1873	1872	1887	1912	1910
150	1881	1881	1893	1873	1873	1887	1912	1909
150.5	1881	1880	1892	1873	1872	1886	1911	1910
151	1881	1880	1892	1873	1873	1886	1911	1910
151.5	1881	1882	1893	1874	1873	1887	1911	1910
152	1882	1882	1894	1874	1873	1888	1912	1911
152.5	1882	1883	1894	1875	1874	1888	1912	1911
153	1884	1884	1895	1875	1875	1890	1914	1913
153.5	1885	1884	1896	1877	1876	1891	1915	1915
154	1886	1886	1897	1879	1877	1892	1917	1916
154.5	1888	1888	1898	1880	1878	1892	1917	1917



Total Quality. Assured.

16015 Shady Falls Road
Elmendorf, Texas 78112

Telephone: 210-635-8100
Facsimile: 210-635-8101
www.intertek.com/building

TEST REPORT FOR STYRO PRODUCTS (D.B.A. INSUL-DECK)

Report No.: 103353314SAT-001b_Rev.3

Date: 08/31/18

Styro Products (d.b.a. Insul-Deck)

Project No. G103353314SAT-001b
13x19 Floor/Ceiling Assembly

16-Aug-2018

Time (min)	Furnace	Furnace	Furnace	Furnace	Furnace	Furnace	Furnace	Furnace
	Probe No. 3 (°F)	Probe No. 4 (°F)	Probe No. 5 (°F)	Probe No. 6 (°F)	Probe No. 7 (°F)	Probe No. 8 (°F)	Probe No. 9 (°F)	Probe No. 10 (°F)
155	1889	1888	1900	1880	1878	1892	1918	1917
155.5	1888	1887	1899	1880	1878	1892	1918	1916
156	1888	1889	1900	1880	1879	1892	1918	1915
156.5	1889	1887	1900	1880	1879	1893	1918	1919
157	1888	1886	1901	1881	1882	1897	1918	1921
157.5	1895	1891	1903	1887	1887	1902	1907	1898
158	1903	1874	1905	1884	1899	1903	1854	1814
158.5	1903	1853	1897	1868	1906	1890	1761	1713
159	1900	1837	1868	1843	1897	1877	1726	1660
159.5	1898	1840	1856	1851	1882	1857	1716	1645
160	1891	1828	1834	1814	1858	1837	1702	1635
160.5	1890	1832	1820	1802	1831	1814	1698	1639
161	1882	1835	1818	1803	1794	1783	1702	1653
161.5	1875	1813	1829	1815	1791	1799	1730	1673
162	1815	1724	1797	1760	1776	1771	1719	1635

Max Temp
Max Allowed
AVG Max



Total Quality. Assured.

16015 Shady Falls Road
Elmendorf, Texas 78112

Telephone: 210-635-8100
Facsimile: 210-635-8101
www.intertek.com/building

TEST REPORT FOR STYRO PRODUCTS (D.B.A. INSUL-DECK)

Report No.: 103353314SAT-001b_Rev.3

Date: 08/31/18

Styro Products (d.b.a. Insul-Deck)

Project No. G103353314SAT-001b
13x19 Floor/Ceiling Assembly

16-Aug-2018

Time (min)	Cold	Cold	Cold	Cold	Cold	Cold	Cold	Cold	Cold	Cold	Cold	Cold
	Side TC 1 (°F)	Side TC 2 (°F)	Side TC 3 (°F)	Side TC 4 (°F)	Side TC 5 (°F)	Side TC 6 (°F)	Side TC 7 (°F)	Side TC 8 (°F)	Side TC 9 (°F)	MIN (°F)	AVG (°F)	MAX (°F)
0	86	85	85	85	84	84	85	84	84	84	85	86
0.5	86	85	85	85	85	84	85	84	84	84	85	86
1	86	85	85	85	84	84	85	84	84	84	85	86
1.5	85	85	85	85	84	84	85	84	84	84	85	85
2	85	85	85	85	84	84	85	84	84	84	85	85
2.5	86	85	85	85	84	84	85	84	84	84	85	86
3	86	85	85	85	84	84	85	84	84	84	85	86
3.5	86	85	85	85	84	84	85	84	85	84	85	86
4	86	85	85	85	84	84	85	84	84	84	85	86
4.5	86	85	85	85	84	84	85	84	84	84	85	86
5	86	85	85	85	84	84	85	84	85	84	85	86
5.5	86	85	85	85	84	84	85	84	84	84	85	86
6	86	85	85	85	84	84	85	84	84	84	85	86
6.5	86	85	85	85	84	84	85	84	85	84	85	86
7	86	85	85	85	84	84	85	84	85	84	85	86
7.5	86	85	85	85	85	84	85	84	85	84	85	86
8	86	85	85	85	84	84	85	84	85	84	85	86
8.5	86	84	85	85	84	84	85	84	85	84	85	86
9	86	85	85	85	84	84	85	84	85	84	85	86
9.5	86	85	85	85	85	84	85	84	85	84	85	86
10	86	85	85	85	84	84	85	84	85	84	85	86
10.5	86	85	85	85	85	84	85	84	85	84	85	86
11	86	85	85	85	84	84	85	84	85	84	85	86
11.5	86	85	85	86	85	84	86	84	85	84	85	86
12	86	85	85	85	84	84	85	84	85	84	85	86
12.5	86	85	85	85	84	84	85	84	85	84	85	86
13	86	85	85	85	84	84	85	84	85	84	85	86
13.5	86	85	85	85	84	84	85	84	85	84	85	86
14	86	85	85	85	85	84	85	84	85	84	85	86
14.5	86	85	85	85	85	84	85	84	85	84	85	86
15	86	85	85	85	84	84	85	84	85	84	85	86
15.5	86	85	85	85	85	84	85	84	85	84	85	86
16	86	85	85	85	85	84	85	84	85	84	85	86
16.5	86	85	85	86	85	85	86	85	85	85	85	86
17	86	85	85	85	85	84	85	84	85	84	85	86
17.5	86	85	85	85	85	84	85	84	85	84	85	86
18	86	85	85	85	85	84	85	84	85	84	85	86
18.5	86	85	85	85	85	84	85	84	85	84	85	86
19	86	85	85	86	85	85	86	85	85	85	85	86
19.5	86	85	85	85	85	84	85	84	85	84	85	86
20	86	85	85	85	85	85	86	84	85	84	85	86
20.5	86	85	85	86	85	85	86	85	86	85	85	86
21	86	85	85	86	85	85	86	85	86	85	85	86
21.5	86	85	85	85	85	84	85	84	85	84	85	86
22	86	85	85	85	85	84	86	84	85	84	85	86
22.5	86	85	85	86	85	85	86	85	86	85	85	86
23	86	85	85	86	85	85	86	84	86	84	85	86
23.5	86	85	85	86	85	85	86	85	86	85	85	86
24	86	85	85	85	85	85	86	85	86	85	85	86
24.5	86	85	85	86	85	85	86	85	86	85	85	86
25	86	85	85	86	85	85	86	85	86	85	85	86
25.5	86	85	85	86	85	85	86	85	86	85	85	86
26	86	85	85	86	85	85	86	85	86	85	85	86
26.5	86	85	85	86	85	85	86	85	86	85	85	86

TEST REPORT FOR STYRO PRODUCTS (D.B.A. INSUL-DECK)

Report No.: 103353314SAT-001b_Rev.3

Date: 08/31/18

Styro Products (d.b.a. Insul-Deck)

Project No. G103353314SAT-001b
13x19 Floor/Ceiling Assembly

16-Aug-2018

Time (min)	Cold Side		Cold Side		Cold Side		Cold Side		Cold Side		Cold Side		MIN (°F)	AVG (°F)	MAX (°F)
	TC 1 (°F)	TC 2 (°F)	TC 3 (°F)	TC 4 (°F)	TC 5 (°F)	TC 6 (°F)	TC 7 (°F)	TC 8 (°F)	TC 9 (°F)	TC 10 (°F)	TC 11 (°F)	TC 12 (°F)			
27	86	85	85	86	85	85	86	85	86	85	85	86			
27.5	86	85	85	86	85	85	86	85	86	85	85	86			
28	86	85	85	86	85	85	86	85	86	85	85	86			
28.5	86	85	85	86	85	85	86	85	86	85	85	86			
29	86	85	85	86	85	85	86	85	86	85	85	86			
29.5	86	85	85	86	85	85	86	85	86	85	85	86			
30	86	85	85	86	85	85	86	85	86	85	85	86			
30.5	86	85	85	86	85	85	86	85	86	85	85	86			
31	86	85	85	86	85	85	86	85	86	85	85	86			
31.5	86	85	85	86	85	85	86	85	86	85	85	86			
32	86	85	85	85	85	85	86	85	86	85	85	86			
32.5	86	85	85	86	85	85	86	85	86	85	85	86			
33	86	85	85	86	85	85	86	85	86	85	85	86			
33.5	86	85	85	86	85	85	86	85	86	85	85	86			
34	86	85	85	86	85	85	86	85	86	85	85	86			
34.5	86	85	85	86	85	85	86	85	86	85	85	86			
35	86	85	85	86	85	85	86	85	87	85	86	87			
35.5	86	85	85	86	85	86	86	86	87	85	86	87			
36	86	86	86	86	86	86	86	86	87	86	86	87			
36.5	86	86	86	86	86	86	86	86	87	86	86	87			
37	86	86	86	86	86	86	86	86	87	86	86	87			
37.5	86	86	86	86	86	86	86	87	88	86	86	88			
38	86	86	86	86	87	87	86	87	88	86	87	88			
38.5	86	86	86	86	87	87	86	87	88	86	87	88			
39	86	87	86	86	87	87	86	88	89	86	87	89			
39.5	86	87	87	86	87	88	86	88	89	86	87	89			
40	86	87	87	86	88	88	86	88	89	86	87	89			
40.5	86	87	87	86	88	89	86	89	89	86	87	89			
41	86	88	87	86	89	89	86	89	90	86	88	90			
41.5	87	88	88	86	89	89	86	90	90	86	88	90			
42	86	88	88	86	89	90	86	90	90	86	88	90			
42.5	86	89	88	86	90	90	86	91	90	86	88	91			
43	87	89	89	86	90	91	86	91	91	86	89	91			
43.5	86	89	89	86	91	91	86	92	90	86	89	92			
44	87	90	89	86	91	92	86	92	91	86	89	92			
44.5	87	90	90	86	92	92	86	93	91	86	90	93			
45	87	91	90	86	92	93	87	93	92	86	90	93			
45.5	87	91	91	86	93	93	87	94	92	86	90	94			
46	87	92	91	86	93	94	87	94	93	86	91	94			
46.5	87	92	92	86	94	94	87	95	93	86	91	95			
47	87	93	92	86	94	95	87	96	93	86	91	96			
47.5	87	93	92	87	95	96	87	96	94	87	92	96			
48	87	94	93	87	96	96	87	97	93	87	92	97			
48.5	87	94	93	87	96	97	87	98	94	87	93	98			
49	87	95	94	87	97	97	87	98	94	87	93	98			
49.5	87	95	94	87	98	98	87	99	94	87	93	99			
50	87	96	95	87	98	99	88	100	96	87	94	100			
50.5	87	97	95	87	99	100	88	100	95	87	94	100			
51	88	97	96	87	100	100	88	101	96	87	95	101			
51.5	88	98	96	87	100	101	88	102	96	87	95	102			
52	88	98	97	88	101	102	88	102	96	88	96	102			
52.5	88	99	97	88	102	102	88	103	96	88	96	103			
53	88	99	98	88	102	103	88	104	97	88	96	104			
53.5	88	100	98	88	103	103	89	104	97	88	97	104			



Total Quality. Assured.

16015 Shady Falls Road
Elmendorf, Texas 78112

Telephone: 210-635-8100
Facsimile: 210-635-8101
www.intertek.com/building

TEST REPORT FOR STYRO PRODUCTS (D.B.A. INSUL-DECK)

Report No.: 103353314SAT-001b_Rev.3

Date: 08/31/18

Styro Products (d.b.a. Insul-Deck)

Project No. G103353314SAT-001b
13x19 Floor/Ceiling Assembly

16-Aug-2018

Time (min)	Cold	Cold	Cold	Cold	Cold	Cold	Cold	Cold	Cold	Cold	Cold	Cold
	Side	Side	Side	Side	Side	Side	Side	Side	Side	Side	Side	Side
	TC 1	TC 2	TC 3	TC 4	TC 5	TC 6	TC 7	TC 8	TC 9	MIN	AVG	MAX
	(°F)	(°F)	(°F)	(°F)	(°F)	(°F)	(°F)	(°F)	(°F)	(°F)	(°F)	(°F)
54	88	100	99	88	104	104	89	105	98	88	97	105
54.5	88	101	99	88	105	105	89	106	99	88	98	106
55	88	102	100	89	105	106	89	107	98	88	98	107
55.5	89	102	101	89	106	107	89	107	100	89	99	107
56	89	103	101	89	107	107	89	108	98	89	99	108
56.5	89	104	102	89	108	108	90	108	96	89	99	108
57	89	104	102	89	108	109	90	109	97	89	100	109
57.5	89	105	103	90	109	110	90	110	99	89	101	110
58	90	106	104	90	110	110	90	111	99	90	101	111
58.5	90	106	104	90	111	111	91	112	99	90	102	112
59	90	107	105	90	112	112	91	112	101	90	102	112
59.5	90	108	105	91	112	113	91	113	100	90	103	113
60	90	108	106	91	113	113	92	114	100	90	103	114
60.5	90	109	107	91	114	114	92	115	100	90	104	115
61	91	110	107	91	115	115	92	116	101	91	104	116
61.5	91	111	108	92	116	116	92	116	99	91	105	116
62	91	111	109	92	116	117	92	117	103	91	105	117
62.5	91	112	109	92	117	117	93	118	101	91	106	118
63	91	112	110	92	118	118	93	118	102	91	106	118
63.5	92	113	111	93	119	119	93	119	101	92	107	119
64	92	114	111	93	120	120	93	120	101	92	107	120
64.5	92	115	112	93	120	121	94	121	104	92	108	121
65	92	115	112	93	121	121	94	122	103	92	108	122
65.5	92	116	113	94	122	122	94	122	102	92	109	122
66	93	117	114	94	123	123	94	123	103	93	109	123
66.5	93	117	115	94	124	124	95	124	103	93	110	124
67	93	118	115	94	125	125	95	125	104	93	110	125
67.5	93	119	116	95	125	125	95	126	103	93	111	126
68	94	120	117	95	126	126	96	126	103	94	111	126
68.5	94	121	117	95	127	127	96	127	104	94	112	127
69	94	121	118	96	128	128	96	128	104	94	113	128
69.5	94	122	119	96	129	129	97	129	104	94	113	129
70	95	123	119	97	130	130	97	129	105	95	114	130
70.5	95	124	120	97	131	130	97	130	108	95	115	131
71	95	124	121	97	131	131	98	131	109	95	115	131
71.5	96	125	122	98	132	132	98	132	108	96	116	132
72	96	126	122	98	133	133	98	133	107	96	116	133
72.5	96	127	123	98	134	134	99	134	108	96	117	134
73	96	127	124	99	135	134	99	134	109	96	117	135
73.5	97	128	124	99	136	135	99	135	109	97	118	136
74	97	129	125	99	136	136	100	136	107	97	118	136
74.5	97	130	126	100	137	137	100	137	109	97	119	137
75	98	131	127	100	138	138	101	138	108	98	120	138
75.5	98	131	128	101	139	139	101	138	109	98	120	139
76	98	132	128	101	140	139	101	139	107	98	121	140
76.5	98	133	129	101	141	140	102	140	107	98	121	141
77	99	134	130	102	142	141	102	141	113	99	123	142
77.5	99	135	131	102	142	142	103	142	112	99	123	142
78	99	135	131	102	143	143	103	143	110	99	123	143
78.5	100	136	132	103	144	144	103	144	113	100	124	144
79	100	137	133	103	145	144	104	144	112	100	125	145
79.5	100	138	133	104	146	145	104	145	112	100	125	146
80	101	138	134	104	147	146	105	146	115	101	126	147
80.5	101	139	135	105	147	147	105	147	113	101	127	147

TEST REPORT FOR STYRO PRODUCTS (D.B.A. INSUL-DECK)

Report No.: 103353314SAT-001b_Rev.3

Date: 08/31/18

Styro Products (d.b.a. Insul-Deck)

Project No. G103353314SAT-001b
13x19 Floor/Ceiling Assembly

16-Aug-2018

Time (min)	Cold	Cold	Cold	Cold	Cold	Cold	Cold	Cold	Cold	Cold	Cold	Cold
	Side	Side	Side	Side	Side	Side	Side	Side	Side	Side	Side	Side
	TC 1	TC 2	TC 3	TC 4	TC 5	TC 6	TC 7	TC 8	TC 9	MIN	AVG	MAX
	(°F)	(°F)	(°F)	(°F)	(°F)	(°F)	(°F)	(°F)	(°F)	(°F)	(°F)	(°F)
81	102	140	136	105	149	148	105	148	116	102	128	149
81.5	102	141	136	105	149	149	106	149	114	102	128	149
82	102	142	137	106	150	150	106	150	116	102	129	150
82.5	103	143	138	106	151	150	107	150	115	103	129	151
83	103	144	139	107	152	151	107	151	112	103	130	152
83.5	104	145	140	107	153	152	107	152	116	104	131	153
84	104	145	140	108	154	153	108	153	117	104	131	154
84.5	104	146	141	108	155	154	108	154	112	104	131	155
85	105	147	142	109	156	155	109	155	114	105	132	156
85.5	105	148	142	109	156	155	109	155	116	105	133	156
86	105	149	143	110	157	156	109	156	114	105	133	157
86.5	106	149	144	110	158	157	110	157	115	106	134	158
87	106	150	145	110	159	158	110	158	113	106	134	159
87.5	106	151	146	111	160	159	110	159	114	106	135	160
88	107	152	147	111	161	159	111	160	113	107	136	161
88.5	107	153	147	112	162	160	111	160	117	107	137	162
89	108	154	148	112	162	161	112	162	119	108	138	162
89.5	108	155	149	113	163	162	112	162	118	108	138	163
90	108	156	150	113	164	163	113	163	117	108	139	164
90.5	109	156	151	114	165	164	113	164	117	109	139	165
91	109	157	152	114	166	165	114	165	116	109	140	166
91.5	110	158	152	115	167	165	114	166	115	110	140	167
92	110	159	153	115	168	166	115	167	116	110	141	168
92.5	110	160	154	116	168	167	115	168	119	110	142	168
93	111	161	155	116	170	168	116	169	122	111	143	170
93.5	111	162	155	116	170	169	116	169	117	111	143	170
94	112	163	156	117	171	170	116	170	119	112	144	171
94.5	112	164	157	118	172	170	117	171	118	112	144	172
95	112	165	158	118	173	171	117	172	117	112	145	173
95.5	113	165	159	119	174	172	118	173	119	113	146	174
96	113	166	160	119	174	173	118	174	119	113	146	174
96.5	113	167	161	120	175	174	119	175	118	113	147	175
97	114	168	162	120	176	175	119	176	117	114	147	176
97.5	114	169	162	120	177	176	119	177	123	114	149	177
98	115	170	163	121	178	176	120	178	119	115	149	178
98.5	115	171	164	122	179	177	120	179	119	115	150	179
99	115	172	165	122	180	178	121	180	122	115	151	180
99.5	116	173	166	123	181	179	121	181	125	116	152	181
100	116	174	167	123	182	180	122	182	120	116	152	182
100.5	117	175	168	124	183	181	122	183	122	117	153	183
101	117	176	169	124	184	182	123	184	126	117	154	184
101.5	118	177	170	125	184	182	123	184	124	118	154	184
102	118	178	171	125	185	183	124	185	124	118	155	185
102.5	119	179	172	126	186	184	124	187	124	119	156	187
103	119	180	173	126	187	185	125	188	126	119	157	188
103.5	119	181	174	127	188	186	125	188	122	119	157	188
104	120	182	175	127	189	187	125	189	122	120	157	189
104.5	120	183	176	128	190	188	126	190	121	120	158	190
105	120	184	177	128	191	189	127	192	120	120	159	192
105.5	121	185	178	129	192	190	127	192	121	121	159	192
106	121	186	179	129	193	191	128	193	124	121	160	193
106.5	122	187	180	130	194	192	128	195	127	122	162	195
107	122	188	181	130	195	193	128	195	128	122	162	195
107.5	123	189	183	131	196	194	129	197	131	123	164	197



Total Quality. Assured.

16015 Shady Falls Road
Elmendorf, Texas 78112

Telephone: 210-635-8100
Facsimile: 210-635-8101
www.intertek.com/building

TEST REPORT FOR STYRO PRODUCTS (D.B.A. INSUL-DECK)

Report No.: 103353314SAT-001b_Rev.3

Date: 08/31/18

Styro Products (d.b.a. Insul-Deck)

Project No. G103353314SAT-001b
13x19 Floor/Ceiling Assembly

16-Aug-2018

Time (min)	Cold Side		Cold Side		Cold Side		Cold Side		Cold Side		Cold Side		MIN (°F)	AVG (°F)	MAX (°F)
	TC 1 (°F)	TC 2 (°F)	TC 3 (°F)	TC 4 (°F)	TC 5 (°F)	TC 6 (°F)	TC 7 (°F)	TC 8 (°F)	TC 9 (°F)						
108	123	190	184	131	197	195	129	198	128	123	164	198			
108.5	124	191	185	132	197	196	130	199	129	124	165	199			
109	124	192	186	132	198	197	131	200	130	124	166	200			
109.5	125	194	187	133	199	198	131	201	128	125	166	201			
110	125	195	189	134	200	199	132	202	130	125	167	202			
110.5	125	196	190	134	201	200	132	203	126	125	167	203			
111	126	197	191	135	202	200	133	204	128	126	168	204			
111.5	126	198	193	135	203	202	133	205	127	126	169	205			
112	127	199	195	136	204	203	134	206	132	127	171	206			
112.5	127	200	197	137	205	204	134	208	125	125	171	208			
113	128	201	199	137	206	205	135	209	129	128	172	209			
113.5	128	202	202	138	207	206	135	210	132	128	173	210			
114	129	203	202	138	208	207	136	211	130	129	174	211			
114.5	129	204	203	139	209	208	137	212	132	129	175	212			
115	130	205	205	139	210	209	137	213	133	130	176	213			
115.5	130	207	205	140	211	209	138	214	134	130	176	214			
116	131	208	206	141	212	211	138	216	132	131	177	216			
116.5	131	209	206	141	213	211	139	216	133	131	178	216			
117	132	210	207	142	214	213	139	217	135	132	179	217			
117.5	132	211	207	142	215	213	139	218	135	132	179	218			
118	133	212	208	143	216	214	140	220	141	133	181	220			
118.5	133	213	209	144	217	215	141	221	138	133	181	221			
119	134	214	209	144	218	216	141	222	136	134	182	222			
119.5	134	215	209	145	219	217	142	223	135	134	182	223			
120	134	216	210	145	219	218	142	224	135	134	183	224			
120.5	135	217	211	146	220	219	143	225	132	132	183	225			
121	136	218	210	147	221	220	144	226	134	134	184	226			
121.5	136	219	210	148	222	220	144	227	137	136	185	227			
122	136	220	212	148	223	221	145	228	135	135	185	228			
122.5	137	221	214	149	224	222	145	229	140	137	187	229			
123	137	222	215	150	225	223	146	229	138	137	187	229			
123.5	138	223	215	150	226	223	146	230	140	138	188	230			
124	138	224	215	151	227	224	147	231	136	136	188	231			
124.5	139	225	217	151	227	225	147	232	131	131	188	232			
125	139	226	218	152	228	226	148	233	133	133	189	233			
125.5	140	227	218	153	229	226	148	234	132	132	190	234			
126	140	228	220	153	230	227	149	235	142	140	192	235			
126.5	141	228	220	154	231	228	150	236	138	138	192	236			
127	141	229	221	155	231	229	150	236	138	138	192	236			
127.5	142	230	222	155	232	229	151	237	138	138	193	237			
128	142	231	222	156	233	230	151	238	134	134	193	238			
128.5	143	232	223	157	234	231	152	239	131	131	194	239			
129	143	233	224	157	234	231	152	240	134	134	194	240			
129.5	143	233	225	158	235	232	153	240	136	136	195	240			
130	144	234	226	159	236	232	153	241	138	138	196	241			
130.5	145	235	227	159	237	233	154	242	137	137	197	242			
131	145	236	227	160	237	234	155	242	135	135	197	242			
131.5	146	236	228	161	238	234	155	243	137	137	198	243			
132	146	237	229	161	239	235	156	244	139	139	198	244			
132.5	147	238	229	162	239	235	156	245	135	135	198	245			
133	147	239	230	163	240	236	157	245	141	141	200	245			
133.5	148	240	231	163	241	237	158	246	146	146	201	246			
134	148	240	230	164	242	237	158	247	142	142	201	247			
134.5	148	241	231	165	242	238	158	247	136	136	201	247			



Total Quality. Assured.

16015 Shady Falls Road
Elmendorf, Texas 78112

Telephone: 210-635-8100
Facsimile: 210-635-8101
www.intertek.com/building

TEST REPORT FOR STYRO PRODUCTS (D.B.A. INSUL-DECK)

Report No.: 103353314SAT-001b_Rev.3

Date: 08/31/18

Styro Products (d.b.a. Insul-Deck)

Project No. G103353314SAT-001b
13x19 Floor/Ceiling Assembly

16-Aug-2018

Time (min)	Cold	Cold	Cold	Cold	Cold	Cold	Cold	Cold	Cold	Cold	Cold	Cold	Cold
	Side TC 1 (°F)	Side TC 2 (°F)	Side TC 3 (°F)	Side TC 4 (°F)	Side TC 5 (°F)	Side TC 6 (°F)	Side TC 7 (°F)	Side TC 8 (°F)	Side TC 9 (°F)	MIN (°F)	AVG (°F)	MAX (°F)	
135	149	242	233	165	243	238	159	248	135	135	201	248	
135.5	150	242	234	166	243	239	160	249	137	137	202	249	
136	150	243	234	167	244	239	160	249	137	137	203	249	
136.5	151	244	235	167	245	240	161	250	134	134	203	250	
137	151	244	236	168	245	240	162	250	138	138	204	250	
137.5	152	245	236	169	246	241	162	251	139	139	205	251	
138	152	246	237	169	246	242	163	252	149	149	206	252	
138.5	152	246	237	170	247	242	163	252	142	142	206	252	
139	153	247	238	170	248	242	164	253	140	140	206	253	
139.5	153	247	238	171	248	243	164	253	137	137	206	253	
140	154	248	239	172	249	243	165	254	140	140	207	254	
140.5	154	249	239	172	249	244	165	254	142	142	208	254	
141	155	249	239	173	250	244	166	255	139	139	208	255	
141.5	155	250	241	174	250	245	167	255	146	146	209	255	
142	156	250	241	174	251	245	168	256	147	147	210	256	
142.5	156	251	242	175	251	246	168	256	143	143	210	256	
143	157	251	242	176	252	246	168	257	145	145	210	257	
143.5	157	252	242	176	252	247	169	257	139	139	210	257	
144	158	253	244	177	253	247	170	258	143	143	211	258	
144.5	158	253	244	178	254	248	171	259	144	144	212	259	
145	159	254	245	178	254	248	171	259	143	143	212	259	
145.5	159	254	245	179	255	248	172	259	145	145	213	259	
146	160	255	245	180	255	249	173	260	143	143	213	260	
146.5	160	256	246	180	256	249	173	261	144	144	214	261	
147	161	256	246	181	256	250	174	261	140	140	214	261	
147.5	162	256	247	182	257	250	174	261	140	140	214	261	
148	162	257	247	183	257	251	175	262	145	145	215	262	
148.5	163	258	248	183	258	251	176	262	152	152	217	262	
149	163	258	249	184	258	251	176	263	146	146	216	263	
149.5	163	258	249	184	259	252	177	263	141	141	216	263	
150	164	259	249	185	259	252	177	264	141	141	217	264	
150.5	164	259	250	186	259	252	178	264	144	144	217	264	
151	165	259	250	186	260	253	179	264	144	144	218	264	
151.5	165	260	250	187	260	253	179	264	136	136	217	264	
152	166	261	251	188	261	254	180	265	141	141	219	265	
152.5	166	261	251	188	261	254	181	265	136	136	218	265	
153	167	261	252	189	262	254	182	266	139	139	219	266	
153.5	168	262	252	190	262	255	182	266	141	141	220	266	
154	168	262	252	190	262	255	183	266	136	136	219	266	
154.5	168	263	252	191	263	255	183	266	140	140	220	266	



Total Quality. Assured.

16015 Shady Falls Road
Elmendorf, Texas 78112

Telephone: 210-635-8100
Facsimile: 210-635-8101
www.intertek.com/building

TEST REPORT FOR STYRO PRODUCTS (D.B.A. INSUL-DECK)

Report No.: 103353314SAT-001b_Rev.3

Date: 08/31/18

Styro Products (d.b.a. Insul-Deck)

Project No. G103353314SAT-001b
13x19 Floor/Ceiling Assembly

16-Aug-2018

Time (min)	Cold	Cold	Cold	Cold	Cold	Cold	Cold	Cold	Cold	Cold	Cold	Cold
	Side TC 1 (°F)	Side TC 2 (°F)	Side TC 3 (°F)	Side TC 4 (°F)	Side TC 5 (°F)	Side TC 6 (°F)	Side TC 7 (°F)	Side TC 8 (°F)	Side TC 9 (°F)	MIN (°F)	AVG (°F)	MAX (°F)
155	169	263	253	192	263	256	184	267	141	141	221	267
155.5	169	263	253	192	264	256	185	267	141	141	221	267
156	170	264	254	193	264	256	186	268	136	136	221	268
156.5	171	264	254	194	264	257	187	268	152	152	223	268
157	171	265	254	194	265	257	187	268	155	155	224	268
157.5	172	265	255	195	265	257	188	269	153	153	224	269
158	172	266	255	196	266	258	189	269	144	144	224	269
158.5	173	266	255	196	266	258	190	270	147	147	225	270
159	174	267	257	197	266	259	191	270	154	154	226	270
159.5	174	267	257	198	267	259	192	270	149	149	226	270
160	175	268	258	198	267	259	192	271	147	147	226	271
160.5	175	268	258	199	267	260	193	271	141	141	226	271
161	176	268	258	200	268	260	194	271	140	140	226	271
161.5	177	268	258	200	268	260	195	271	139	139	226	271
162	177	269	258	201	269	261	196	271	139	139	227	271
Max Temp	177	269	258	201	269	261	196	271	155	155	227	271
Max Allowed	407	407	407	407	407	407	407	407	407	407	407	407
AVG Max											332	

TEST REPORT FOR STYRO PRODUCTS (D.B.A. INSUL-DECK)

Report No.: 103353314SAT-001b_Rev.3

Date: 08/31/18

Styro Products (d.b.a. Insul-Deck)

Project No. G103353314SAT-001b
13x19 Floor/Ceiling Assembly

16-Aug-2018

Time (min)	Rebar Sector 1			Rebar Sector 2			Rebar Sector 2		
	TC 10 (°F)	TC 11 (°F)	AVG (°F)	TC 12 (°F)	TC 13 (°F)	TC 14 (°F)	TC 15 (°F)	AVG (°F)	
0	86	87	87	87	87	87	87	87	
0.5	86	87	87	87	87	87	87	87	
1	86	87	87	87	87	87	87	87	
1.5	86	87	87	87	87	87	87	87	
2	86	87	87	87	87	87	87	87	
2.5	86	87	87	86	87	87	86	87	
3	86	87	87	87	87	87	86	87	
3.5	86	87	87	87	87	87	86	87	
4	86	87	87	86	86	87	87	87	
4.5	86	87	87	86	86	87	86	86	
5	86	87	87	86	86	87	86	86	
5.5	86	87	87	86	87	87	86	87	
6	86	87	87	86	87	87	87	87	
6.5	86	87	87	87	87	87	87	87	
7	86	87	87	87	87	87	86	87	
7.5	86	87	87	86	86	87	86	86	
8	86	87	87	86	86	87	86	86	
8.5	86	87	87	87	86	87	86	87	
9	86	87	87	87	87	87	87	87	
9.5	86	87	87	87	87	87	87	87	
10	86	87	87	87	87	87	87	87	
10.5	86	87	87	87	87	87	87	87	
11	86	87	87	87	87	87	86	87	
11.5	86	87	87	87	87	87	87	87	
12	86	87	87	87	87	87	87	87	
12.5	86	87	87	87	87	87	87	87	
13	86	87	87	87	87	87	87	87	
13.5	86	87	87	87	87	87	87	87	
14	86	87	87	87	87	87	87	87	
14.5	86	87	87	87	87	87	87	87	
15	86	87	87	87	87	87	87	87	
15.5	86	87	87	87	87	87	87	87	
16	86	87	87	87	87	87	87	87	
16.5	86	87	87	87	87	87	87	87	
17	86	87	87	87	87	87	87	87	
17.5	86	87	87	87	87	87	87	87	
18	86	87	87	87	87	87	87	87	
18.5	86	87	87	87	87	87	87	87	
19	86	87	87	87	87	87	87	87	
19.5	86	87	87	87	87	87	87	87	
20	86	87	87	87	87	87	87	87	
20.5	86	87	87	87	87	87	87	87	
21	86	87	87	87	87	87	87	87	
21.5	86	87	87	87	87	87	87	87	
22	86	87	87	87	87	87	87	87	
22.5	86	87	87	87	87	87	87	87	
23	86	87	87	87	87	87	87	87	
23.5	86	87	87	87	87	87	87	87	
24	86	87	87	87	87	87	87	87	
24.5	86	88	87	87	87	88	87	87	
25	86	88	87	87	87	88	87	87	
25.5	87	88	88	87	88	88	87	88	
26	87	88	88	88	88	88	88	88	
26.5	87	89	88	88	88	88	88	88	

TEST REPORT FOR STYRO PRODUCTS (D.B.A. INSUL-DECK)

Report No.: 103353314SAT-001b_Rev.3

Date: 08/31/18

Styro Products (d.b.a. Insul-Deck)

Project No. G103353314SAT-001b
13x19 Floor/Ceiling Assembly

16-Aug-2018

Time (min)	Rebar Sector 1			Rebar Sector 2			Rebar Sector 2		
	TC 10 (°F)	TC 11 (°F)	AVG (°F)	TC 12 (°F)	TC 13 (°F)	TC 14 (°F)	TC 15 (°F)	AVG (°F)	
27	87	89	88	88	89	88	89	89	
27.5	87	90	89	89	89	89	89	89	
28	87	90	89	89	90	89	89	89	
28.5	88	91	90	90	91	89	90	90	
29	88	92	90	90	91	90	90	90	
29.5	89	92	91	91	92	90	91	91	
30	89	93	91	92	93	91	92	92	
30.5	90	94	92	92	94	92	93	93	
31	91	95	93	93	95	92	93	93	
31.5	91	96	94	94	96	93	94	94	
32	92	97	95	95	97	94	95	95	
32.5	93	98	96	96	98	95	96	96	
33	94	99	97	97	99	96	97	97	
33.5	94	100	97	98	101	97	98	99	
34	95	101	98	99	102	98	99	100	
34.5	97	103	100	100	103	99	100	101	
35	97	104	101	102	104	100	101	102	
35.5	98	105	102	103	106	101	102	103	
36	100	106	103	104	107	102	103	104	
36.5	101	108	105	105	108	103	104	105	
37	102	109	106	106	110	105	106	107	
37.5	103	110	107	108	111	106	107	108	
38	104	112	108	109	112	107	108	109	
38.5	105	113	109	110	114	108	110	111	
39	107	115	111	112	115	110	111	112	
39.5	108	116	112	113	117	111	112	113	
40	109	118	114	115	118	112	114	115	
40.5	110	119	115	116	120	114	115	116	
41	112	121	117	117	121	115	116	117	
41.5	113	122	118	119	123	116	118	119	
42	114	124	119	120	124	118	119	120	
42.5	115	125	120	121	125	119	121	122	
43	117	127	122	123	127	121	122	123	
43.5	118	128	123	124	128	122	123	124	
44	119	130	125	126	130	123	125	126	
44.5	121	131	126	127	131	125	126	127	
45	122	133	128	129	133	126	128	129	
45.5	124	134	129	130	134	128	129	130	
46	125	136	131	131	136	129	131	132	
46.5	126	137	132	133	137	130	132	133	
47	128	139	134	134	138	132	134	135	
47.5	129	140	135	136	140	133	135	136	
48	130	142	136	137	142	135	137	138	
48.5	132	143	138	139	143	136	138	139	
49	133	145	139	140	145	137	140	141	
49.5	135	146	141	142	146	139	141	142	
50	136	148	142	143	147	140	143	143	
50.5	137	149	143	145	149	142	144	145	
51	139	151	145	146	150	143	146	146	
51.5	140	152	146	147	152	144	147	148	
52	141	154	148	149	153	146	149	149	
52.5	142	155	149	150	154	147	150	150	
53	144	157	151	152	156	148	152	152	
53.5	145	158	152	153	157	150	153	153	

TEST REPORT FOR STYRO PRODUCTS (D.B.A. INSUL-DECK)

Report No.: 103353314SAT-001b_Rev.3

Date: 08/31/18

Styro Products (d.b.a. Insul-Deck)

Project No. G103353314SAT-001b
13x19 Floor/Ceiling Assembly

16-Aug-2018

Time (min)	Rebar Sector 1			Rebar Sector 2				
	TC 10 (°F)	TC 11 (°F)	AVG (°F)	TC 12 (°F)	TC 13 (°F)	TC 14 (°F)	TC 15 (°F)	AVG (°F)
54	146	159	153	154	158	151	154	154
54.5	148	161	155	156	159	152	156	156
55	149	162	156	157	161	153	157	157
55.5	150	164	157	158	162	155	159	159
56	151	165	158	160	163	156	160	160
56.5	153	167	160	161	165	157	161	161
57	154	168	161	162	166	159	163	163
57.5	155	169	162	164	167	160	164	164
58	156	171	164	165	168	161	166	165
58.5	158	172	165	166	170	162	167	166
59	159	174	167	168	171	164	168	168
59.5	160	175	168	169	172	165	170	169
60	161	176	169	170	174	166	171	170
60.5	162	178	170	171	175	167	172	171
61	164	179	172	173	176	168	174	173
61.5	165	180	173	174	177	170	175	174
62	166	182	174	175	178	171	176	175
62.5	167	183	175	176	179	172	178	176
63	168	184	176	178	181	173	179	178
63.5	169	186	178	179	182	174	180	179
64	170	187	179	180	183	176	182	180
64.5	171	188	180	182	184	177	183	182
65	173	189	181	183	185	178	184	183
65.5	174	191	183	184	187	179	186	184
66	175	192	184	185	188	180	187	185
66.5	176	193	185	186	189	182	188	186
67	177	195	186	188	190	183	189	188
67.5	178	196	187	189	191	184	190	189
68	179	197	188	190	192	185	192	190
68.5	180	198	189	191	193	186	193	191
69	181	199	190	192	195	187	194	192
69.5	182	201	192	194	195	189	195	193
70	183	202	193	195	197	190	196	195
70.5	184	203	194	196	198	191	198	196
71	186	205	196	197	199	192	199	197
71.5	187	206	197	198	200	194	200	198
72	188	207	198	199	201	195	201	199
72.5	189	208	199	201	202	196	203	201
73	190	209	200	202	203	197	204	202
73.5	191	210	201	203	205	198	205	203
74	192	211	202	204	206	199	206	204
74.5	193	213	203	206	207	201	208	206
75	194	214	204	207	208	202	209	207
75.5	195	215	205	209	209	203	210	208
76	196	216	206	210	211	204	211	209
76.5	197	217	207	211	212	205	212	210
77	198	218	208	212	213	206	213	211
77.5	200	219	210	213	214	208	215	213
78	201	220	211	214	215	209	216	214
78.5	202	221	212	216	216	210	217	215
79	203	223	213	217	217	212	218	216
79.5	204	224	214	218	218	213	220	217
80	205	224	215	219	219	214	220	218
80.5	206	226	216	220	220	215	222	219

TEST REPORT FOR STYRO PRODUCTS (D.B.A. INSUL-DECK)

Report No.: 103353314SAT-001b_Rev.3

Date: 08/31/18

Styro Products (d.b.a. Insul-Deck)

Project No. G103353314SAT-001b
13x19 Floor/Ceiling Assembly

16-Aug-2018

Time (min)	Rebar Sector 1			Rebar Sector 2			Rebar Sector 2		
	TC 10 (°F)	TC 11 (°F)	AVG (°F)	TC 12 (°F)	TC 13 (°F)	TC 14 (°F)	TC 15 (°F)	AVG (°F)	
81	207	227	217	221	221	216	223	220	
81.5	208	228	218	222	222	217	224	221	
82	209	229	219	223	223	219	225	223	
82.5	210	229	220	224	224	220	226	224	
83	211	230	221	225	225	221	227	225	
83.5	213	231	222	226	226	222	228	226	
84	214	232	223	227	226	223	229	226	
84.5	214	233	224	228	227	224	230	227	
85	216	234	225	230	228	226	232	229	
85.5	217	235	226	231	229	227	233	230	
86	218	236	227	232	230	228	234	231	
86.5	219	237	228	233	230	229	235	232	
87	220	238	229	234	231	231	236	233	
87.5	221	239	230	235	232	232	237	234	
88	222	240	231	236	233	233	238	235	
88.5	223	241	232	237	234	234	239	236	
89	224	242	233	239	235	235	240	237	
89.5	225	242	234	240	235	236	241	238	
90	226	243	235	241	236	237	242	239	
90.5	227	244	236	242	237	238	243	240	
91	228	245	237	243	238	239	244	241	
91.5	229	246	238	244	239	240	245	242	
92	230	247	239	245	240	241	247	243	
92.5	231	248	240	247	241	241	247	244	
93	233	249	241	248	241	242	248	245	
93.5	234	249	242	249	242	243	249	246	
94	235	250	243	250	243	244	251	247	
94.5	236	251	244	251	244	245	251	248	
95	237	252	245	253	245	245	253	249	
95.5	238	253	246	254	245	246	254	250	
96	239	254	247	255	247	247	255	251	
96.5	240	255	248	256	247	248	256	252	
97	242	256	249	257	248	249	257	253	
97.5	242	256	249	258	249	250	258	254	
98	244	257	251	260	250	250	259	255	
98.5	245	258	252	261	251	251	260	256	
99	246	259	253	262	251	252	261	257	
99.5	247	260	254	263	252	253	262	258	
100	248	261	255	264	253	254	263	259	
100.5	249	262	256	265	254	254	264	259	
101	250	263	257	266	255	255	265	260	
101.5	252	263	258	268	256	256	266	262	
102	253	264	259	269	256	257	267	262	
102.5	254	265	260	270	257	258	268	263	
103	255	266	261	271	258	258	269	264	
103.5	256	267	262	272	259	259	270	265	
104	257	267	262	273	260	260	271	266	
104.5	259	268	264	274	260	261	272	267	
105	260	269	265	275	261	261	273	268	
105.5	261	270	266	276	262	262	274	269	
106	262	271	267	278	263	263	275	270	
106.5	263	272	268	279	264	264	276	271	
107	264	272	268	280	264	265	277	272	
107.5	266	273	270	281	265	265	277	272	

TEST REPORT FOR STYRO PRODUCTS (D.B.A. INSUL-DECK)

Report No.: 103353314SAT-001b_Rev.3

Date: 08/31/18

Styro Products (d.b.a. Insul-Deck)

Project No. G103353314SAT-001b
13x19 Floor/Ceiling Assembly

16-Aug-2018

Time (min)	Rebar Sector 1			Rebar Sector 2			Rebar Sector 2		
	TC 10 (°F)	TC 11 (°F)	AVG (°F)	TC 12 (°F)	TC 13 (°F)	TC 14 (°F)	TC 15 (°F)	AVG (°F)	
108	267	274	271	282	266	266	278	273	
108.5	268	275	272	283	266	267	279	274	
109	269	276	273	284	267	268	280	275	
109.5	270	277	274	285	268	268	281	276	
110	271	277	274	286	269	269	282	277	
110.5	272	278	275	287	270	270	283	278	
111	273	279	276	288	270	271	284	278	
111.5	275	280	278	289	271	272	285	279	
112	276	280	278	290	272	272	286	280	
112.5	277	281	279	291	272	273	286	281	
113	278	282	280	292	273	274	287	282	
113.5	279	283	281	293	274	274	288	282	
114	280	284	282	294	274	275	289	283	
114.5	281	284	283	295	275	276	290	284	
115	282	285	284	296	276	277	291	285	
115.5	283	286	285	296	277	278	292	286	
116	285	287	286	297	277	279	293	287	
116.5	286	287	287	298	278	279	293	287	
117	287	288	288	299	279	280	294	288	
117.5	287	289	288	300	280	281	295	289	
118	289	290	290	301	280	282	296	290	
118.5	290	291	291	301	281	283	297	291	
119	291	291	291	302	282	284	298	292	
119.5	292	292	292	303	282	285	298	292	
120	293	293	293	304	283	285	299	293	
120.5	294	294	294	305	284	286	300	294	
121	295	294	295	305	284	286	301	294	
121.5	296	295	296	306	285	287	302	295	
122	297	296	297	307	286	288	303	296	
122.5	298	296	297	308	286	289	303	297	
123	299	297	298	308	287	289	304	297	
123.5	300	298	299	309	288	290	305	298	
124	301	299	300	310	288	291	306	299	
124.5	302	300	301	311	289	292	307	300	
125	303	300	302	311	290	292	307	300	
125.5	304	301	303	312	291	293	308	301	
126	305	302	304	312	291	294	309	302	
126.5	305	302	304	313	292	294	309	302	
127	306	303	305	314	293	295	310	303	
127.5	307	304	306	314	294	296	311	304	
128	308	304	306	315	294	296	312	304	
128.5	308	305	307	316	295	297	312	305	
129	309	306	308	316	296	298	313	306	
129.5	310	306	308	317	296	298	314	306	
130	310	308	309	318	297	299	315	307	
130.5	311	308	310	318	298	300	315	308	
131	312	309	311	319	299	301	316	309	
131.5	312	309	311	319	299	301	316	309	
132	313	310	312	320	300	302	317	310	
132.5	314	311	313	320	301	303	318	311	
133	314	312	313	321	302	303	319	311	
133.5	315	312	314	322	302	304	319	312	
134	315	313	314	322	303	304	320	312	
134.5	316	314	315	323	304	305	321	313	

TEST REPORT FOR STYRO PRODUCTS (D.B.A. INSUL-DECK)

Report No.: 103353314SAT-001b_Rev.3

Date: 08/31/18

Styro Products (d.b.a. Insul-Deck)

Project No. G103353314SAT-001b
13x19 Floor/Ceiling Assembly

16-Aug-2018

Time (min)	Rebar Sector 1			Rebar Sector 2				
	TC 10 (°F)	TC 11 (°F)	AVG (°F)	TC 12 (°F)	TC 13 (°F)	TC 14 (°F)	TC 15 (°F)	AVG (°F)
135	316	315	316	323	305	306	321	314
135.5	317	315	316	324	306	306	322	315
136	317	316	317	325	306	307	323	315
136.5	318	317	318	325	307	308	323	316
137	318	317	318	325	308	308	324	316
137.5	319	318	319	326	309	309	325	317
138	319	319	319	327	310	309	325	318
138.5	320	320	320	327	311	310	326	319
139	320	320	320	328	311	310	326	319
139.5	321	321	321	328	312	311	327	320
140	321	322	322	329	313	312	328	321
140.5	322	323	323	329	314	312	328	321
141	322	324	323	330	315	313	329	322
141.5	322	325	324	330	316	314	330	323
142	323	325	324	331	317	314	330	323
142.5	323	326	325	331	318	314	331	324
143	323	327	325	332	319	315	331	324
143.5	324	328	326	333	320	316	332	325
144	325	329	327	333	321	316	332	326
144.5	325	329	327	333	322	317	333	326
145	325	330	328	334	323	317	334	327
145.5	326	331	329	334	324	318	334	328
146	326	332	329	335	325	318	335	328
146.5	327	333	330	335	326	319	335	329
147	327	333	330	335	326	319	336	329
147.5	328	334	331	336	328	320	337	330
148	328	335	332	336	329	320	337	331
148.5	329	336	333	337	330	321	338	332
149	329	337	333	337	331	322	338	332
149.5	330	338	334	337	332	322	339	333
150	330	339	335	338	333	322	339	333
150.5	331	340	336	338	335	323	340	334
151	331	341	336	339	335	323	340	334
151.5	332	341	337	339	337	324	341	335
152	332	343	338	339	338	324	341	336
152.5	333	343	338	340	339	325	342	337
153	334	344	339	341	340	325	343	337
153.5	334	345	340	341	341	326	343	338
154	335	346	341	342	343	326	344	339
154.5	336	347	342	343	344	327	345	340



Total Quality. Assured.

16015 Shady Falls Road
Elmendorf, Texas 78112

Telephone: 210-635-8100
Facsimile: 210-635-8101
www.intertek.com/building

TEST REPORT FOR STYRO PRODUCTS (D.B.A. INSUL-DECK)

Report No.: 103353314SAT-001b_Rev.3

Date: 08/31/18

Styro Products (d.b.a. Insul-Deck)

Project No. G103353314SAT-001b
13x19 Floor/Ceiling Assembly

16-Aug-2018

Time (min)	Rebar Sector 1			Rebar Sector 2				
	TC 10 (°F)	TC 11 (°F)	AVG (°F)	TC 12 (°F)	TC 13 (°F)	TC 14 (°F)	TC 15 (°F)	AVG (°F)
155	337	348	343	343	345	327	345	340
155.5	337	349	343	344	346	328	346	341
156	338	350	344	345	347	328	347	342
156.5	339	351	345	346	349	328	347	343
157	340	353	347	347	350	329	348	344
157.5	341	353	347	347	351	329	348	344
158	341	355	348	348	352	330	349	345
158.5	343	356	350	349	354	330	350	346
159	343	357	350	350	358	331	351	348
159.5	345	358	352	351	337	332	351	343
160	345	359	352	348	333	332	352	341
160.5	346	360	353	348	331	332	353	341
161	347	361	354	349	329	333	353	341
161.5	348	363	356	307	710	320	354	423
162	350	404	377	303	820	1001	347	618
Max Temp	350	404	377	351	820	1001	354	618
Max Allowed								
AVG Max			1100					1100

TEST REPORT FOR STYRO PRODUCTS (D.B.A. INSUL-DECK)

Report No.: 103353314SAT-001b_Rev.3

Date: 08/31/18

Styro Products (d.b.a. Insul-Deck)

Project No. G103353314SAT-001b
13x19 Floor/Ceiling Assembly

16-Aug-2018

Time (min)	Rebar Sector 3					Rebar Sector 4				
	TC 16 (°F)	TC 17 (°F)	TC 18 (°F)	TC 19 (°F)	AVG (°F)	TC 20 (°F)	TC 21 (°F)	TC 22 (°F)	TC 23 (°F)	AVG (°F)
0	86	87	87	87	87	87	87	87	87	87
0.5	86	87	87	87	87	87	86	87	87	87
1	86	87	87	87	87	87	87	87	87	87
1.5	86	86	87	86	86	86	86	87	87	87
2	86	87	87	87	87	87	87	87	87	87
2.5	86	86	87	87	87	86	86	87	87	87
3	86	86	87	87	87	87	86	87	87	87
3.5	86	86	87	87	87	87	87	87	87	87
4	86	86	87	87	87	86	86	87	87	87
4.5	86	86	87	87	87	87	86	87	87	87
5	86	86	87	87	87	86	86	87	87	87
5.5	86	87	87	87	87	87	86	87	86	87
6	86	87	87	87	87	86	86	87	87	87
6.5	86	87	87	87	87	86	86	87	87	87
7	86	87	87	87	87	87	87	87	87	87
7.5	86	87	88	86	87	86	86	87	87	87
8	86	87	88	86	87	86	86	87	86	86
8.5	86	87	88	87	87	87	87	87	87	87
9	86	87	88	87	87	87	87	87	87	87
9.5	86	87	88	87	87	87	87	87	87	87
10	86	87	89	87	87	87	87	87	87	87
10.5	86	87	88	87	87	86	86	87	87	87
11	86	87	89	87	87	86	86	87	87	87
11.5	86	87	89	87	87	87	87	87	87	87
12	86	87	89	87	87	86	86	87	87	87
12.5	86	87	89	87	87	87	87	87	87	87
13	86	87	89	87	87	87	86	87	87	87
13.5	86	87	90	87	88	87	87	87	87	87
14	86	87	90	87	88	87	87	87	87	87
14.5	86	87	90	87	88	87	87	87	87	87
15	86	87	90	87	88	87	87	87	87	87
15.5	86	87	90	87	88	87	87	87	87	87
16	86	87	90	87	88	87	87	87	87	87
16.5	86	87	90	87	88	87	87	87	87	87
17	86	87	90	87	88	87	87	87	87	87
17.5	86	87	90	87	88	87	87	87	87	87
18	87	87	91	87	88	87	87	87	87	87
18.5	86	87	90	87	88	87	87	87	87	87
19	87	87	91	87	88	87	87	87	87	87
19.5	86	87	91	87	88	87	87	88	87	87
20	86	87	91	87	88	87	87	88	87	87
20.5	86	87	91	87	88	87	87	87	87	87
21	87	87	91	87	88	87	87	88	87	87
21.5	87	87	91	87	88	87	87	87	87	87
22	87	87	91	87	88	87	87	88	87	87
22.5	87	88	91	87	88	87	87	88	87	87
23	87	88	91	87	88	87	87	88	87	87
23.5	87	88	91	87	88	87	87	88	87	87
24	87	88	91	87	88	87	87	88	87	87
24.5	87	88	91	87	88	87	87	88	88	88
25	87	88	91	87	88	87	87	88	88	88
25.5	87	88	91	87	88	88	88	88	88	88
26	87	89	92	88	89	88	88	89	88	88
26.5	87	89	92	88	89	88	88	89	88	88



Total Quality. Assured.

16015 Shady Falls Road
Elmendorf, Texas 78112

Telephone: 210-635-8100
Facsimile: 210-635-8101
www.intertek.com/building

TEST REPORT FOR STYRO PRODUCTS (D.B.A. INSUL-DECK)

Report No.: 103353314SAT-001b_Rev.3

Date: 08/31/18

Styro Products (d.b.a. Insul-Deck)

Project No. G103353314SAT-001b
13x19 Floor/Ceiling Assembly

16-Aug-2018

Time (min)	Rebar	Rebar	Rebar	Rebar	AVG	Rebar	Rebar	Rebar	Rebar	AVG
	Sector 3 TC 16	Sector 3 TC 17	Sector 3 TC 18	Sector 3 TC 19		Sector 4 TC 20	Sector 4 TC 21	Sector 4 TC 22	Sector 4 TC 23	
	(°F)	(°F)	(°F)	(°F)	(°F)	(°F)	(°F)	(°F)	(°F)	(°F)
27	88	90	92	88	90	89	89	89	89	89
27.5	88	91	92	89	90	89	89	90	89	89
28	89	91	93	89	91	90	89	91	89	90
28.5	89	92	93	90	91	90	90	91	90	90
29	90	93	94	90	92	91	90	92	91	91
29.5	90	94	94	91	92	92	91	92	91	92
30	91	95	95	92	93	93	92	93	92	93
30.5	92	96	96	92	94	93	93	94	93	93
31	93	97	96	93	95	94	93	95	93	94
31.5	94	98	97	94	96	95	94	96	94	95
32	95	99	98	95	97	96	95	97	95	96
32.5	96	100	99	96	98	97	96	98	96	97
33	97	102	100	97	99	98	97	99	97	98
33.5	98	103	101	98	100	100	98	100	98	99
34	99	104	102	99	101	101	99	101	99	100
34.5	100	106	103	100	102	102	100	102	100	101
35	101	107	104	101	103	103	101	103	101	102
35.5	103	108	105	102	105	104	102	105	103	104
36	104	110	107	103	106	106	104	106	104	105
36.5	105	111	108	105	107	107	105	107	105	106
37	107	112	109	106	109	108	106	108	106	107
37.5	108	114	110	107	110	110	107	110	107	109
38	109	115	112	108	111	111	108	111	108	110
38.5	111	117	113	110	113	112	110	112	110	111
39	112	118	114	111	114	113	111	113	111	112
39.5	114	120	115	113	116	115	112	115	113	114
40	115	121	117	114	117	116	114	116	114	115
40.5	116	123	118	115	118	118	115	118	115	117
41	118	125	120	117	120	119	116	119	117	118
41.5	119	126	121	118	121	121	118	121	118	120
42	121	128	122	120	123	122	119	122	120	121
42.5	122	129	124	121	124	123	120	123	121	122
43	123	131	125	123	126	125	122	125	123	124
43.5	125	132	127	124	127	126	123	126	124	125
44	126	134	128	126	129	128	125	128	126	127
44.5	128	136	129	127	130	129	126	129	127	128
45	129	138	131	128	132	131	128	131	129	130
45.5	131	139	132	130	133	132	129	132	130	131
46	132	141	134	131	135	133	130	133	132	132
46.5	134	142	135	133	136	135	132	135	134	134
47	135	144	136	134	137	136	133	136	135	135
47.5	137	146	138	136	139	138	135	138	137	137
48	138	147	139	137	140	139	136	139	138	138
48.5	139	149	140	139	142	141	137	141	140	140
49	141	151	142	140	144	142	139	142	142	141
49.5	142	153	143	142	145	144	140	144	143	143
50	144	154	144	143	146	145	142	145	145	144
50.5	145	156	146	145	148	146	143	146	146	145
51	146	157	147	146	149	148	145	148	148	147
51.5	148	159	148	148	151	149	146	149	150	149
52	149	160	150	149	152	150	147	151	151	150
52.5	151	162	151	150	154	152	148	152	152	151
53	152	164	152	152	155	153	150	153	154	153
53.5	154	165	153	153	156	155	151	155	156	154

TEST REPORT FOR STYRO PRODUCTS (D.B.A. INSUL-DECK)

Report No.: 103353314SAT-001b_Rev.3

Date: 08/31/18

Styro Products (d.b.a. Insul-Deck)

Project No. G103353314SAT-001b
13x19 Floor/Ceiling Assembly

16-Aug-2018

Time (min)	Rebar	Rebar	Rebar	Rebar	AVG	Rebar	Rebar	Rebar	Rebar	AVG
	Sector 3 TC 16	Sector 3 TC 17	Sector 3 TC 18	Sector 3 TC 19		Sector 4 TC 20	Sector 4 TC 21	Sector 4 TC 22	Sector 4 TC 23	
	(°F)	(°F)	(°F)	(°F)	(°F)	(°F)	(°F)	(°F)	(°F)	(°F)
54	155	167	155	155	158	156	152	156	157	155
54.5	156	168	156	156	159	158	154	157	159	157
55	158	170	157	158	161	159	155	159	160	158
55.5	159	172	158	159	162	160	156	160	162	160
56	160	174	159	160	163	161	157	161	163	161
56.5	162	175	160	162	165	162	159	163	165	162
57	163	177	162	163	166	164	160	164	166	164
57.5	164	178	163	165	168	165	161	165	168	165
58	166	180	164	166	169	166	162	166	170	166
58.5	167	182	165	168	171	168	164	168	171	168
59	168	183	166	169	172	169	165	169	173	169
59.5	169	185	167	170	173	170	166	170	174	170
60	171	187	168	172	175	172	167	171	175	171
60.5	172	189	169	173	176	173	168	172	177	173
61	173	190	171	175	177	174	170	174	179	174
61.5	174	192	171	176	178	175	171	175	180	175
62	176	193	173	177	180	177	172	176	181	177
62.5	177	195	174	179	181	178	173	177	183	178
63	178	197	175	180	183	179	174	178	184	179
63.5	179	198	176	181	184	180	175	179	186	180
64	180	200	177	183	185	181	177	181	187	182
64.5	182	201	178	184	186	183	178	182	189	183
65	183	202	179	185	187	184	179	183	190	184
65.5	184	203	180	187	189	185	180	184	191	185
66	185	204	181	188	190	186	181	185	193	186
66.5	186	204	182	189	190	187	182	186	194	187
67	187	205	183	191	192	189	183	187	195	189
67.5	189	206	184	192	193	190	184	188	197	190
68	190	206	185	194	194	191	186	190	198	191
68.5	191	206	186	195	195	192	187	191	199	192
69	192	207	187	196	196	193	188	192	201	194
69.5	193	207	188	198	197	194	189	193	202	195
70	194	207	189	199	197	195	190	194	203	196
70.5	195	208	190	200	198	196	191	195	205	197
71	197	208	191	202	200	198	192	196	206	198
71.5	197	208	192	203	200	199	193	197	208	199
72	199	209	193	204	201	200	195	198	209	201
72.5	200	209	194	206	202	201	196	200	210	202
73	201	209	195	207	203	202	197	201	212	203
73.5	202	209	196	208	204	203	198	202	213	204
74	203	209	197	209	205	204	199	203	214	205
74.5	205	210	198	211	206	206	200	204	216	207
75	206	210	199	212	207	206	201	205	217	207
75.5	207	210	200	213	208	208	202	206	218	209
76	208	211	201	215	209	209	203	208	219	210
76.5	209	211	202	216	210	210	204	209	220	211
77	210	211	202	217	210	211	205	210	221	212
77.5	212	211	203	219	211	212	206	211	223	213
78	213	212	204	220	212	214	207	212	224	214
78.5	214	212	205	221	213	215	208	213	225	215
79	216	212	205	223	214	216	209	215	227	217
79.5	217	212	206	224	215	217	210	216	228	218
80	218	212	206	225	215	218	211	217	229	219
80.5	219	213	207	226	216	219	212	218	230	220



Total Quality. Assured.

16015 Shady Falls Road
Elmendorf, Texas 78112

Telephone: 210-635-8100
Facsimile: 210-635-8101
www.intertek.com/building

TEST REPORT FOR STYRO PRODUCTS (D.B.A. INSUL-DECK)

Report No.: 103353314SAT-001b_Rev.3

Date: 08/31/18

Styro Products (d.b.a. Insul-Deck)

Project No. G103353314SAT-001b
13x19 Floor/Ceiling Assembly

16-Aug-2018

Time (min)	Rebar Sector 3		Rebar Sector 3		Rebar Sector 3		Rebar Sector 4		Rebar Sector 4		Rebar Sector 4	
	TC 16 (°F)	TC 17 (°F)	TC 18 (°F)	TC 19 (°F)	AVG (°F)	TC 20 (°F)	TC 21 (°F)	TC 22 (°F)	TC 23 (°F)	AVG (°F)		
81	220	213	207	228	217	220	213	219	231	221		
81.5	222	213	208	229	218	221	214	220	232	222		
82	223	214	208	230	219	222	215	221	234	223		
82.5	224	214	208	231	219	223	216	222	235	224		
83	225	215	209	232	220	224	217	223	236	225		
83.5	227	215	209	233	221	225	218	225	237	226		
84	228	216	210	234	222	226	219	226	238	227		
84.5	229	216	210	236	223	227	220	227	239	228		
85	230	217	211	237	224	228	221	228	240	229		
85.5	232	217	211	238	225	228	222	229	242	230		
86	232	217	211	239	225	229	223	230	243	231		
86.5	234	218	212	240	226	230	224	231	244	232		
87	235	219	213	241	227	231	225	233	245	234		
87.5	236	219	213	242	228	232	226	234	246	235		
88	237	219	213	243	228	233	227	235	247	236		
88.5	239	220	214	245	230	234	228	236	248	237		
89	240	220	214	246	230	235	228	237	249	237		
89.5	241	221	215	247	231	236	229	238	250	238		
90	242	221	215	248	232	237	230	239	252	240		
90.5	243	222	216	249	233	238	231	241	253	241		
91	244	222	216	250	233	239	232	242	254	242		
91.5	246	223	216	251	234	240	233	243	255	243		
92	247	223	217	252	235	241	234	244	256	244		
92.5	248	224	217	253	236	242	235	245	257	245		
93	249	224	217	254	236	242	236	246	258	246		
93.5	250	225	218	256	237	243	236	247	259	246		
94	251	225	218	256	238	244	237	248	260	247		
94.5	253	225	219	258	239	245	238	250	261	249		
95	253	226	219	259	239	246	239	251	263	250		
95.5	255	227	219	259	240	247	240	252	263	251		
96	256	227	220	261	241	248	241	253	265	252		
96.5	257	227	220	262	242	249	242	254	266	253		
97	258	228	221	263	243	250	242	255	267	254		
97.5	259	228	221	264	243	250	243	256	268	254		
98	260	229	222	265	244	251	244	257	269	255		
98.5	261	229	222	265	244	252	245	258	270	256		
99	262	230	222	266	245	253	246	259	271	257		
99.5	264	230	223	268	246	254	247	261	272	259		
100	265	231	223	269	247	255	248	262	273	260		
100.5	265	231	224	270	248	256	248	263	274	260		
101	266	232	224	271	248	256	249	264	275	261		
101.5	268	232	225	272	249	258	250	265	276	262		
102	269	233	225	273	250	258	251	266	277	263		
102.5	270	233	226	273	251	259	252	267	278	264		
103	271	234	226	274	251	260	253	269	279	265		
103.5	272	234	227	275	252	261	253	270	280	266		
104	272	235	227	276	253	262	254	271	281	267		
104.5	273	236	228	277	254	262	255	272	282	268		
105	274	236	228	278	254	263	256	273	283	269		
105.5	275	237	229	279	255	264	257	274	284	270		
106	276	237	229	280	256	265	258	275	285	271		
106.5	277	238	230	281	257	266	258	277	285	272		
107	278	239	230	282	257	266	259	278	286	272		
107.5	279	239	231	283	258	267	260	279	287	273		

TEST REPORT FOR STYRO PRODUCTS (D.B.A. INSUL-DECK)

Report No.: 103353314SAT-001b_Rev.3

Date: 08/31/18

Styro Products (d.b.a. Insul-Deck)

Project No. G103353314SAT-001b
13x19 Floor/Ceiling Assembly

16-Aug-2018

Time (min)	Rebar	Rebar	Rebar	Rebar	Rebar	Rebar	Rebar	Rebar	Rebar	Rebar
	Sector 3 TC 16 (°F)	Sector 3 TC 17 (°F)	Sector 3 TC 18 (°F)	Sector 3 TC 19 (°F)	Sector 3 AVG (°F)	Sector 4 TC 20 (°F)	Sector 4 TC 21 (°F)	Sector 4 TC 22 (°F)	Sector 4 TC 23 (°F)	Sector 4 AVG (°F)
108	280	240	231	284	259	268	261	280	288	274
108.5	281	240	232	285	260	269	262	281	289	275
109	282	240	232	285	260	270	262	282	290	276
109.5	282	241	233	286	261	271	263	283	291	277
110	284	242	234	287	262	271	264	284	292	278
110.5	284	242	234	288	262	272	265	285	293	279
111	285	243	235	289	263	273	265	286	293	279
111.5	286	244	236	290	264	274	266	287	294	280
112	287	244	236	291	265	275	267	289	295	282
112.5	288	245	237	292	266	275	268	290	296	282
113	289	246	238	292	266	276	269	291	297	283
113.5	289	246	238	293	267	277	269	292	298	284
114	290	247	239	294	268	278	270	293	299	285
114.5	291	248	240	295	269	279	271	294	300	286
115	292	248	240	296	269	279	272	295	301	287
115.5	293	249	241	296	270	280	273	296	301	288
116	294	250	242	298	271	281	273	297	302	288
116.5	295	250	242	298	271	282	274	298	303	289
117	295	251	244	299	272	283	275	300	304	291
117.5	296	252	244	300	273	283	276	301	305	291
118	297	253	245	301	274	284	277	302	306	292
118.5	298	254	246	302	275	285	277	303	306	293
119	299	254	247	302	276	286	278	304	307	294
119.5	300	255	248	303	277	286	279	305	308	295
120	300	256	248	304	277	287	280	306	309	296
120.5	301	257	249	305	278	288	281	308	310	297
121	302	257	250	306	279	289	281	309	310	297
121.5	303	258	250	306	279	290	282	310	312	299
122	303	259	252	307	280	290	283	311	312	299
122.5	304	260	252	308	281	291	284	312	313	300
123	305	261	253	309	282	292	284	313	314	301
123.5	306	262	254	310	283	293	285	315	315	302
124	307	263	255	310	284	294	286	316	316	303
124.5	307	263	256	311	284	295	287	317	316	304
125	308	264	256	312	285	295	287	318	317	304
125.5	309	265	257	313	286	296	288	319	318	305
126	309	266	258	314	287	297	289	320	318	306
126.5	310	267	259	314	288	297	290	321	319	307
127	311	268	260	315	289	298	291	322	320	308
127.5	312	269	261	316	290	299	291	324	321	309
128	312	270	262	316	290	300	292	325	322	310
128.5	313	271	263	317	291	301	293	326	322	311
129	314	272	264	318	292	301	294	327	323	311
129.5	314	273	265	319	293	302	294	328	324	312
130	315	274	266	320	294	303	295	329	325	313
130.5	316	275	267	320	295	304	296	330	325	314
131	317	276	268	321	296	305	297	331	326	315
131.5	317	277	269	322	296	305	297	332	327	315
132	318	278	270	322	297	306	298	333	327	316
132.5	319	279	271	323	298	307	299	334	328	317
133	319	280	272	324	299	308	299	335	329	318
133.5	320	281	273	324	300	308	300	336	329	318
134	321	283	274	325	301	309	301	337	330	319
134.5	321	284	275	326	302	310	302	338	331	320

TEST REPORT FOR STYRO PRODUCTS (D.B.A. INSUL-DECK)

Report No.: 103353314SAT-001b_Rev.3

Date: 08/31/18

Styro Products (d.b.a. Insul-Deck)

Project No. G103353314SAT-001b
13x19 Floor/Ceiling Assembly

16-Aug-2018

Time (min)	Rebar Sector 3		Rebar Sector 3		Rebar Sector 3		Rebar Sector 4		Rebar Sector 4		Rebar Sector 4	
	TC 16 (°F)	TC 17 (°F)	TC 18 (°F)	TC 19 (°F)	AVG (°F)	TC 20 (°F)	TC 21 (°F)	TC 22 (°F)	TC 23 (°F)	AVG (°F)		
135	322	285	277	326	303	311	302	339	331	321		
135.5	323	286	278	327	304	312	303	340	332	322		
136	323	287	279	327	304	312	304	341	332	322		
136.5	324	288	280	328	305	313	304	341	333	323		
137	325	290	281	329	306	314	305	342	334	324		
137.5	325	291	282	329	307	314	306	343	334	324		
138	326	292	283	330	308	315	307	343	335	325		
138.5	326	293	284	330	308	316	307	344	336	326		
139	327	294	285	331	309	316	308	345	336	326		
139.5	327	296	287	332	311	317	309	346	337	327		
140	328	297	288	332	311	318	309	346	337	328		
140.5	329	298	289	333	312	319	310	347	338	329		
141	329	300	290	334	313	319	311	347	338	329		
141.5	329	301	291	334	314	320	312	348	339	330		
142	330	302	292	335	315	321	312	348	339	330		
142.5	330	303	293	335	315	321	313	349	339	331		
143	331	305	294	336	317	322	314	349	340	331		
143.5	331	306	296	336	317	323	315	350	340	332		
144	332	308	297	337	319	324	315	351	341	333		
144.5	332	309	298	338	319	325	316	352	341	334		
145	333	310	299	338	320	325	317	352	342	334		
145.5	333	312	300	339	321	326	317	353	342	335		
146	333	313	301	339	322	327	318	353	342	335		
146.5	334	314	302	340	323	328	319	354	343	336		
147	334	316	303	340	323	328	319	354	343	336		
147.5	334	317	305	340	324	329	320	355	343	337		
148	335	318	306	341	325	330	321	356	344	338		
148.5	335	320	307	341	326	331	322	357	344	339		
149	335	321	308	342	327	332	323	358	345	340		
149.5	336	323	309	342	328	333	323	359	345	340		
150	336	324	310	342	328	334	324	360	345	341		
150.5	336	326	312	343	329	334	325	361	346	342		
151	337	327	312	343	330	335	326	362	346	342		
151.5	337	328	314	344	331	336	327	364	346	343		
152	337	330	315	344	332	337	327	366	347	344		
152.5	338	331	316	344	332	338	328	367	347	345		
153	338	332	317	345	333	339	329	369	348	346		
153.5	339	334	318	345	334	340	330	371	348	347		
154	339	335	319	345	335	341	330	373	348	348		
154.5	340	337	321	346	336	342	331	375	349	349		

TEST REPORT FOR STYRO PRODUCTS (D.B.A. INSUL-DECK)

Report No.: 103353314SAT-001b_Rev.3

Date: 08/31/18

Styro Products (d.b.a. Insul-Deck)

Project No. G103353314SAT-001b
13x19 Floor/Ceiling Assembly

16-Aug-2018

Time (min)	Rebar	Rebar	Rebar	Rebar	Rebar Sector 3 AVG	Rebar	Rebar	Rebar	Rebar	Rebar Sector 4 AVG
	Sector 3 TC 16 (°F)	Sector 3 TC 17 (°F)	Sector 3 TC 18 (°F)	Sector 3 TC 19 (°F)		Sector 4 TC 20 (°F)	Sector 4 TC 21 (°F)	Sector 4 TC 22 (°F)	Sector 4 TC 23 (°F)	
155	340	339	322	346	337	343	332	377	349	350
155.5	341	340	323	346	338	345	333	379	350	352
156	341	341	324	347	338	346	333	381	350	353
156.5	342	343	325	347	339	347	334	383	350	354
157	343	344	326	347	340	348	335	385	351	355
157.5	344	346	328	348	342	349	335	387	351	356
158	345	347	329	348	342	324	372	1223	332	563
158.5	346	348	330	348	343	317	583	1248	365	628
159	347	350	331	348	344	313	1205	1704	430	913
159.5	349	351	333	349	346	310	1646	1634	490	1020
160	350	352	333	349	346	336	1658	1647	576	1054
160.5	351	353	334	349	347	557	1657	1640	1027	1220
161	351	354	336	348	347	624	1856	1602	1390	1368
161.5	346	355	334	320	339				1502	1502
162	346	357	335	379	354					
Max Temp	351	357	336	379	354	624	1856	1704	1502	1502
Max Allowed										
AVG Max					1100					1100



Total Quality. Assured.

16015 Shady Falls Road
Elmendorf, Texas 78112

Telephone: 210-635-8100
Facsimile: 210-635-8101
www.intertek.com/building

TEST REPORT FOR STYRO PRODUCTS (D.B.A. INSUL-DECK)

Report No.: 103353314SAT-001b_Rev.3

Date: 08/31/18

SECTION 15

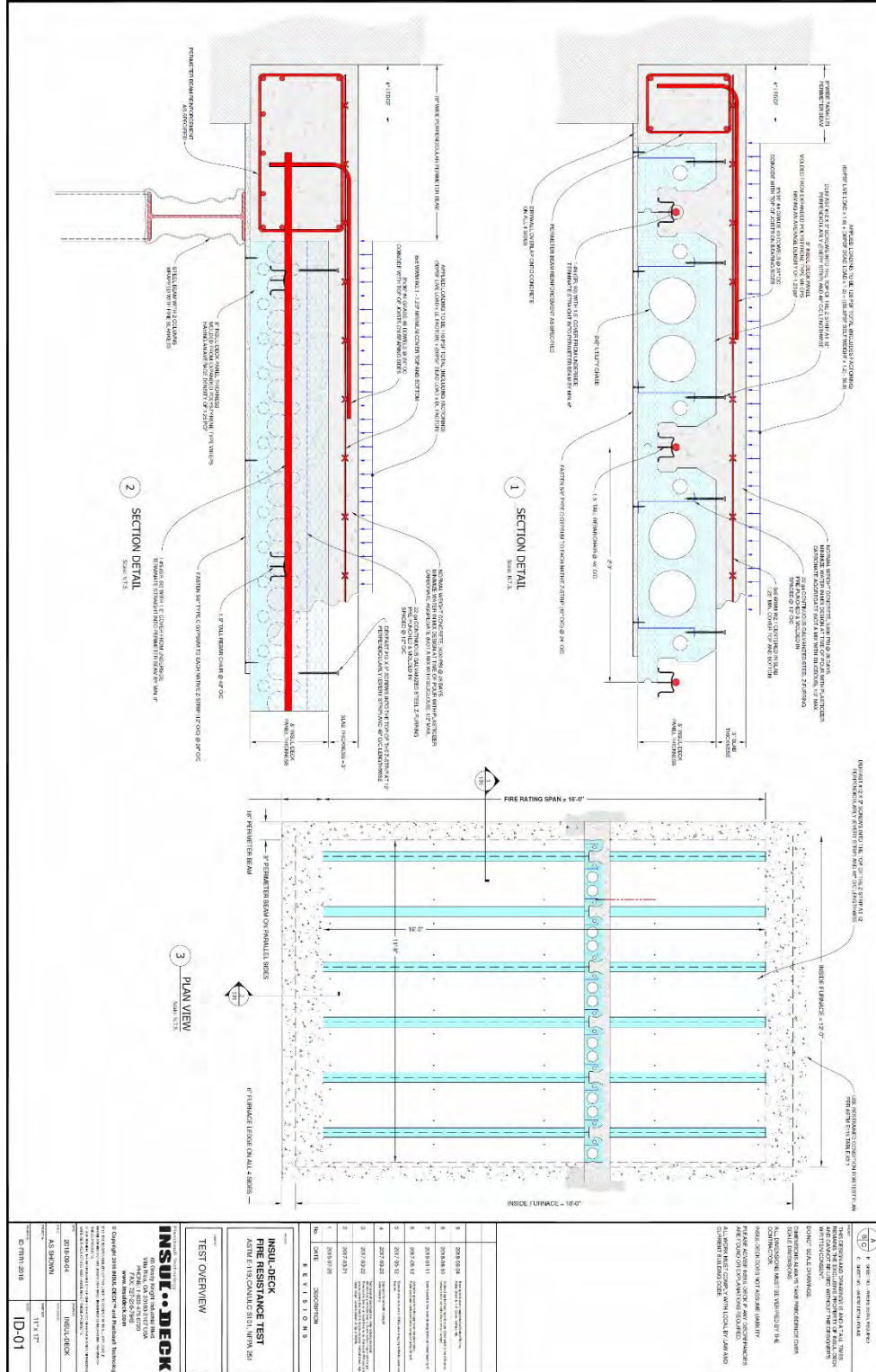
DRAWINGS AND TC LOCATIONS

The test specimen drawings which follow have been reviewed by Intertek B&C and are representative of the test specimen(s) reported herein. Test specimen construction was verified by Intertek B&C per the drawings included in this report. Any deviations are documented herein or on the drawings.

TEST REPORT FOR STYRO PRODUCTS (D.B.A. INSUL-DECK)

Report No.: 103353314SAT-001b_Rev.3

Date: 08/31/18

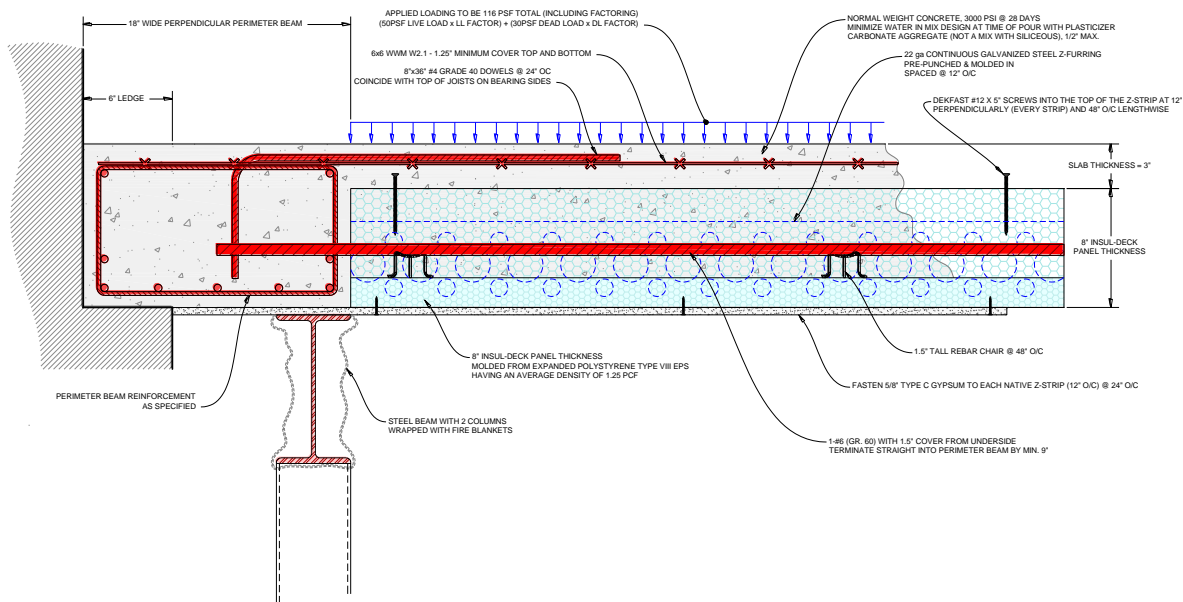
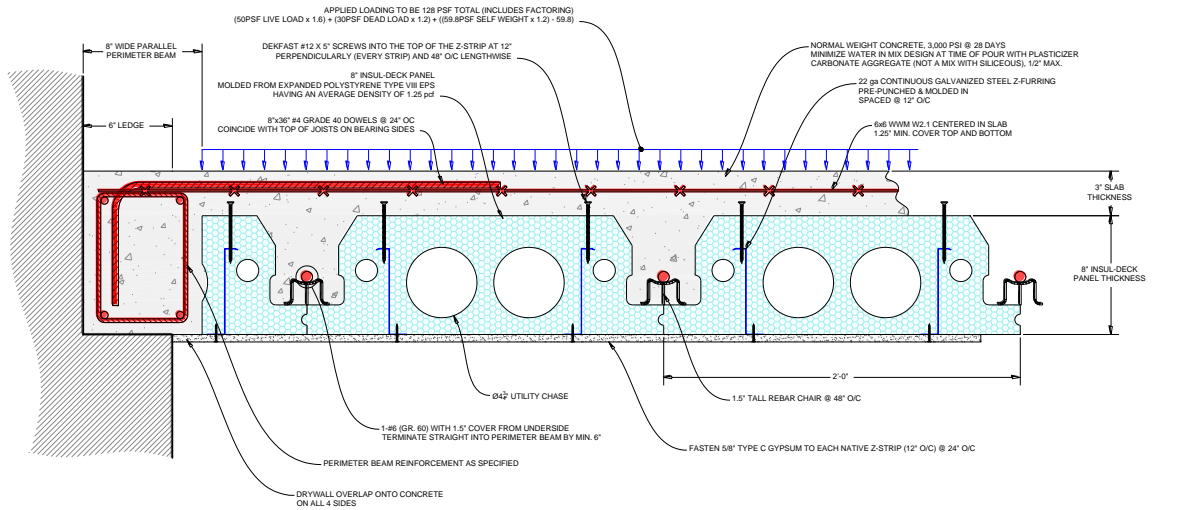


TEST REPORT FOR STYRO PRODUCTS (D.B.A. INSUL-DECK)

Report No.: 103353314SAT-001b_Rev.3

Date: 08/31/18

Assembly Side View (enlarged for clarity)



TEST REPORT FOR STYRO PRODUCTS (D.B.A. INSUL-DECK)

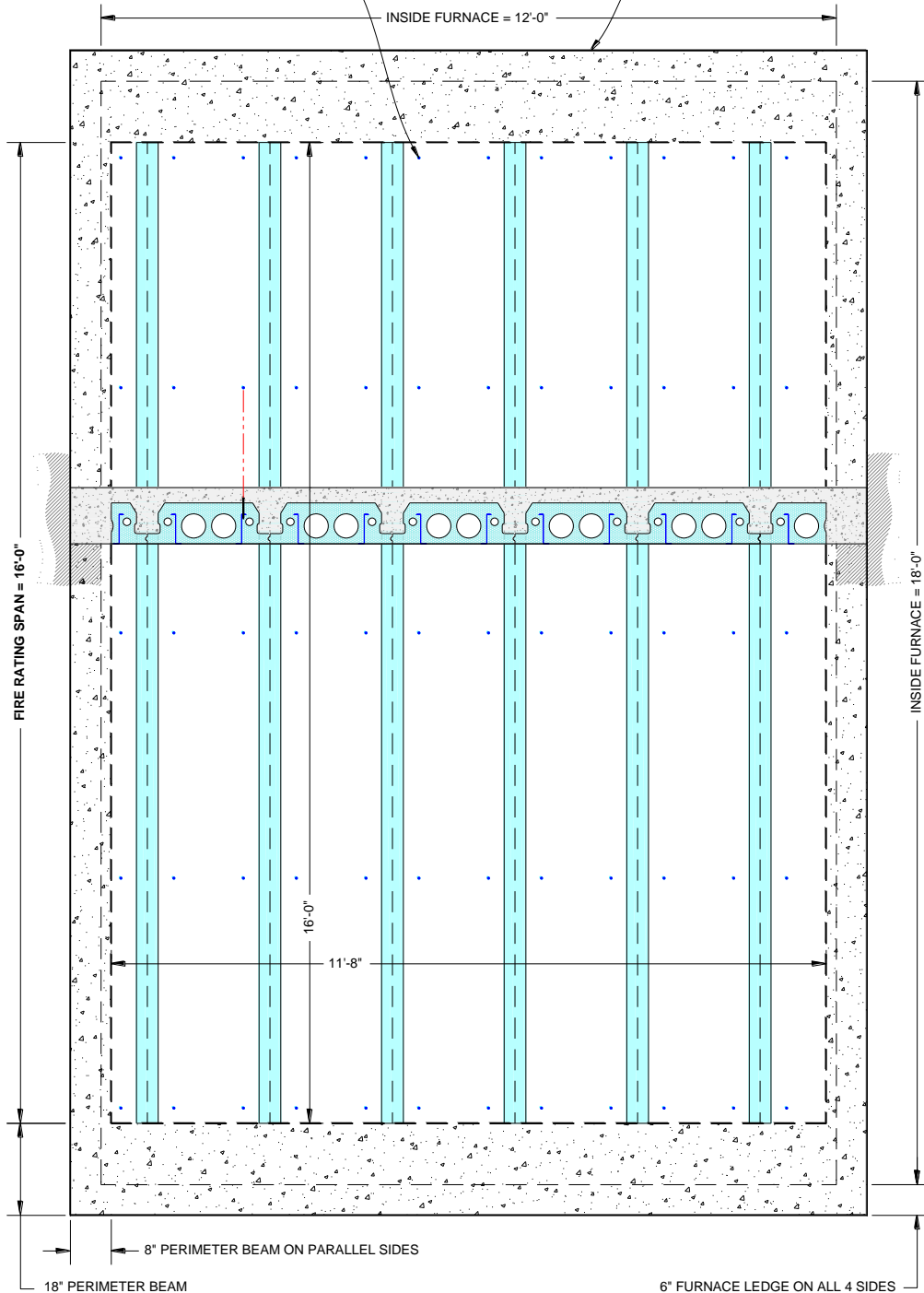
Report No.: 103353314SAT-001b_Rev.3

Date: 08/31/18

Assembly Top View (enlarged for clarity)

DEKFAST #12 X 5" SCREWS INTO THE TOP OF THE Z-STRIP AT 12" PERPENDICULARLY (EVERY STRIP) AND 48" O/C LENGTHWISE

USE RESTRAINED CONDITION FOR TEST PLAN PER ASTM E119 TABLE X3.1

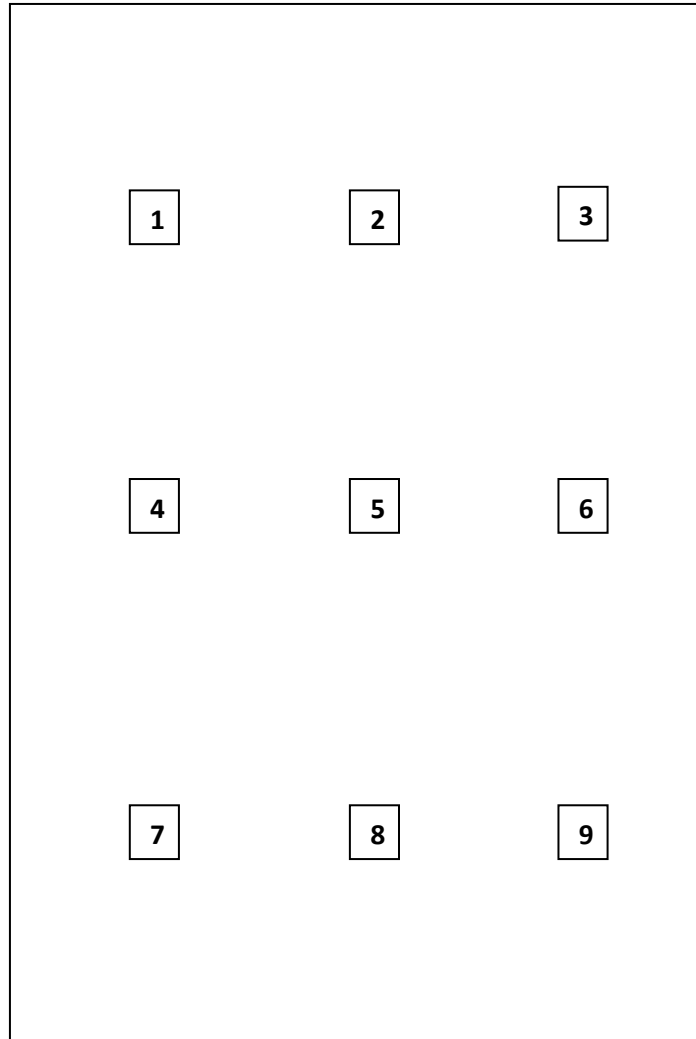


TEST REPORT FOR STYRO PRODUCTS (D.B.A. INSUL-DECK)

Report No.: 103353314SAT-001b_Rev.3

Date: 08/31/18

**Un-exposed Side Thermocouple Placement
(Not to scale)**



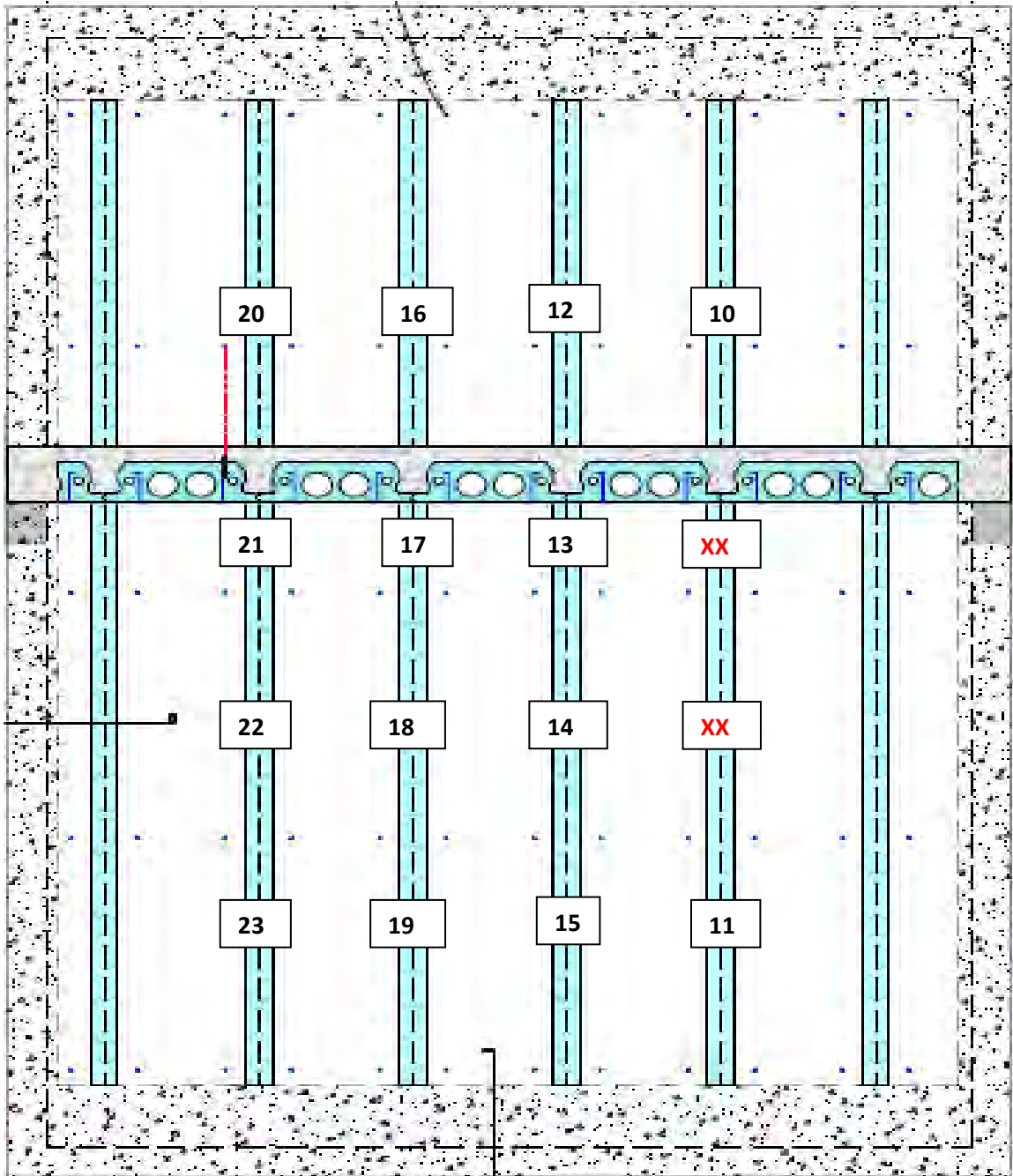
(Furnace Door)

TEST REPORT FOR STYRO PRODUCTS (D.B.A. INSUL-DECK)

Report No.: 103353314SAT-001b_Rev.3

Date: 08/31/18

Tensioning Member TC Locations - *Not to scale* (XX denotes TCs damaged prior to test)





(Furnace Door)

TEST REPORT FOR STYRO PRODUCTS (D.B.A. INSUL-DECK)

Report No.: 103353314SAT-001b_Rev.3

Date: 08/31/18

SECTION 16 REVISION LOG

REVISION #	DATE	PAGES	REVISION
0	08/31/18	N/A	Original Report Issue Note: Report originally written by Victor Burgos and reviewed by Herb Stansberry. The report has been revised by Abel de Hoyos to include new drawings at a time Burgos was no longer employed by Intertek and Stansberry was not available for review
1	09/14/2018	78-80	Revised Drawings 
2	02/04/2019	1-80	<ol style="list-style-type: none"> 1. Revised to correct product and company information. 2. Revised to correct company affiliation of Observer in Section 5. 3. Change the wording of "angles" to "strips" 
3	03/08/2019	1-83	<ol style="list-style-type: none"> 1. Updated Product information throughout. 